

# WASHINGTON COUNTY COMMUNITY HEALTH SURVEY – March 2012

Commissioned by:  
Aurora Health Care  
Children's Hospital of Wisconsin  
Columbia St. Mary's Health System  
Froedtert Health

In Partnership with:  
Washington County Health Department  
Center for Urban Population Health

# Overview

- Objectives
  - Gather data on behavioral and lifestyle habits of the adult population and household-level data.
  - Gather data on the prevalence of risk factors and disease conditions of the adult population.
  - Compare health data of residents to previous health studies.
  - Compare health data to national and state measurements.

# Methodology

- 18 minute telephone survey of area residents
- 400 completions from November 29 through December 19, 2011
- Two-fold sampling
  - 1) RDD landline sample of listed & unlisted #s (n=300)
    - Respondents randomly selected based on number of adults in household
    - Weighting based on number of adults and number of residential phone numbers in HH
  - 2) Cell phone only sample (n=100)
    - Adult answering the phone designated as the respondent
- All data post-stratified by age and gender of adult residents as of 2010 Census proportions.
- Margin of error: 5%

# Demographics



# Respondent Demographics

	Percent
Gender	
Male	49%
Female	51%
Household Income	
Bottom 40 Percent Bracket	34%
Middle 20 Percent Bracket	16%
Top 40 Percent Bracket	34%
Not sure/No answer	16%

## Respondent Demographics (cont.)

Age	Percent
18 to 34	24%
35 to 44	19%
45 to 54	23%
55 to 64	17%
65 and older	18%

# Respondent Demographics (cont.)

	Percent
Education	
High school or less	39%
Some post high school	33%
College graduate	28%
Marital Status	
Married	61%

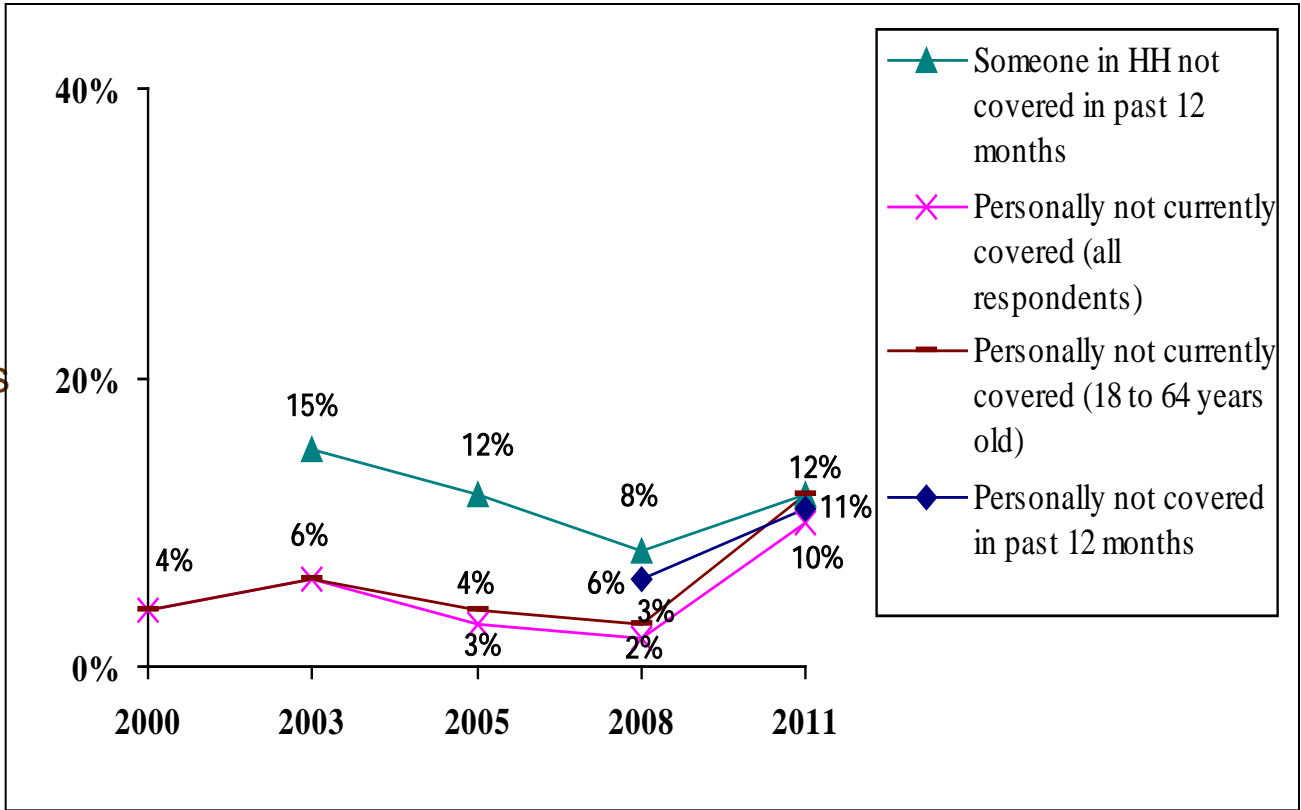
# Health Care Coverage

The image features a decorative header with a teal and dark blue curved bar. In the background, there is a stylized globe with white grid lines on a teal gradient.



# Health Care Coverage

- Personally not covered currently (18+) 2010
  - WI: 11%
  - US: 15%
  - HP2020 Goal: 0%
- Personally not covered currently (18 to 64 years old) 2010
  - WI: 13%
  - US: 18%

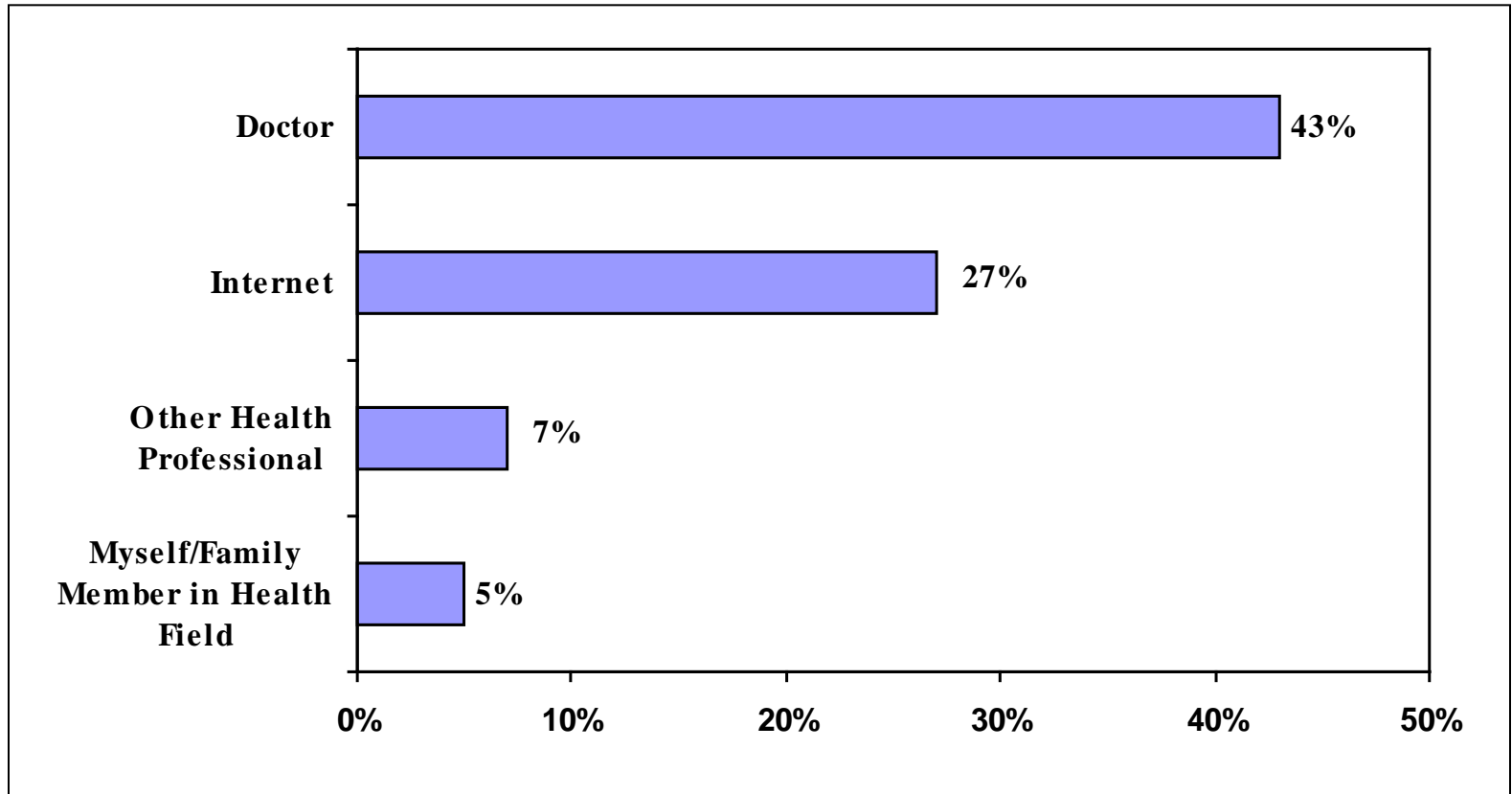




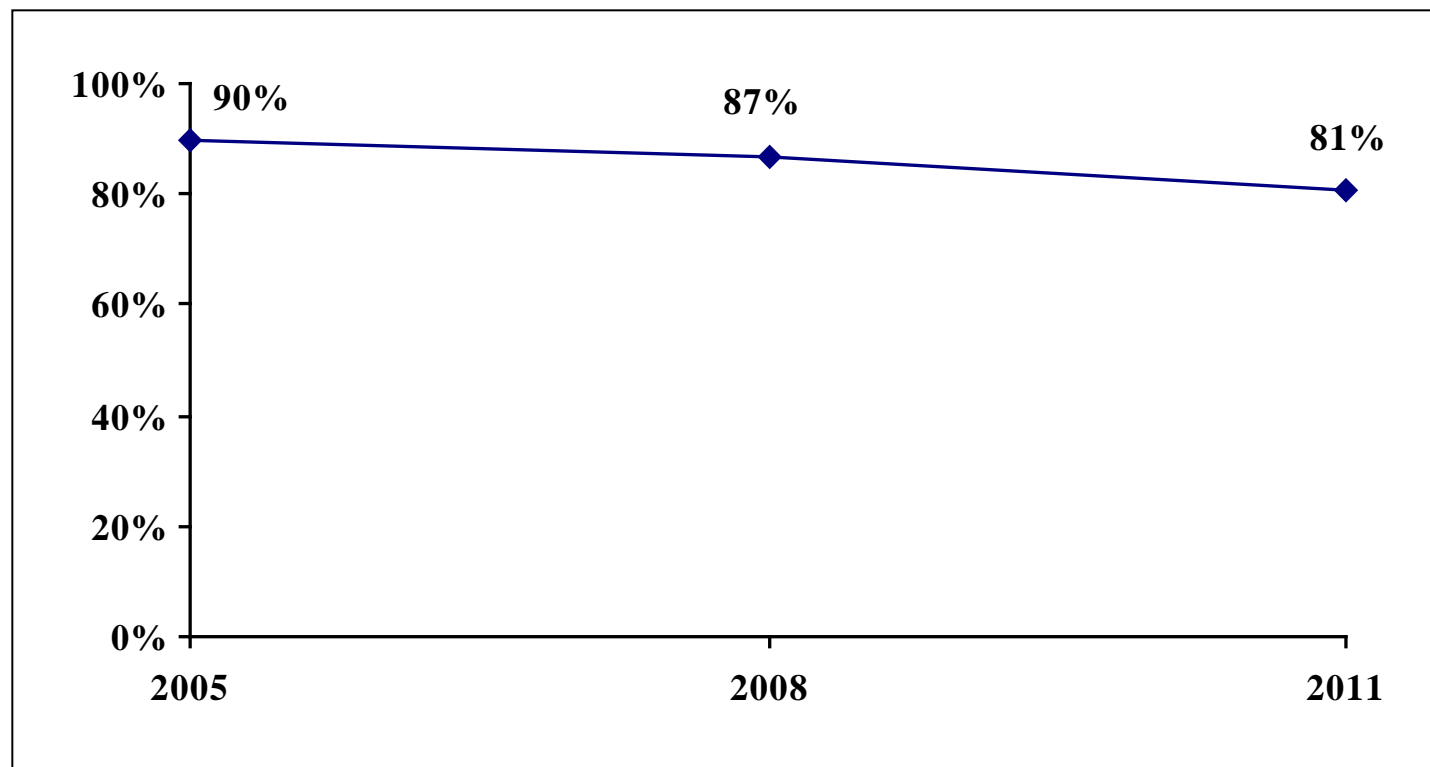
# Health Care Needed (2011)

	Percent
Delayed or Did Not Seek Medical Care Due to Cost (Past 12 Months)	15%
Prescription Medication Not Taken Due to Cost	14%
Unmet Health Care (Past 12 Months)	
Dental Care	19%
Medical Care	12%
Mental Health Care	1%

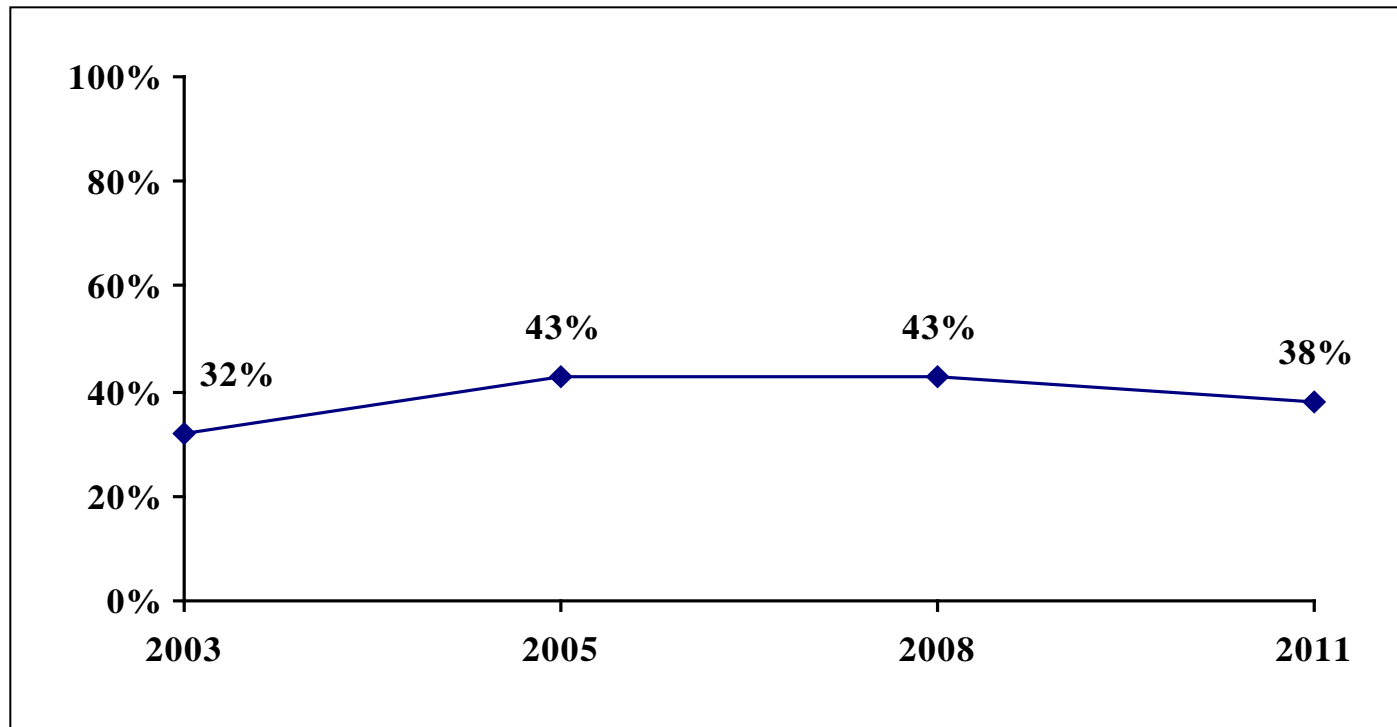
# Health Information Source (2011)



# Doctor or Nurse Practitioner's Office as Primary Health Care Service



# Advance Care Plan<sup>1</sup>



<sup>1</sup>“living will or health care power of attorney” added in 2005

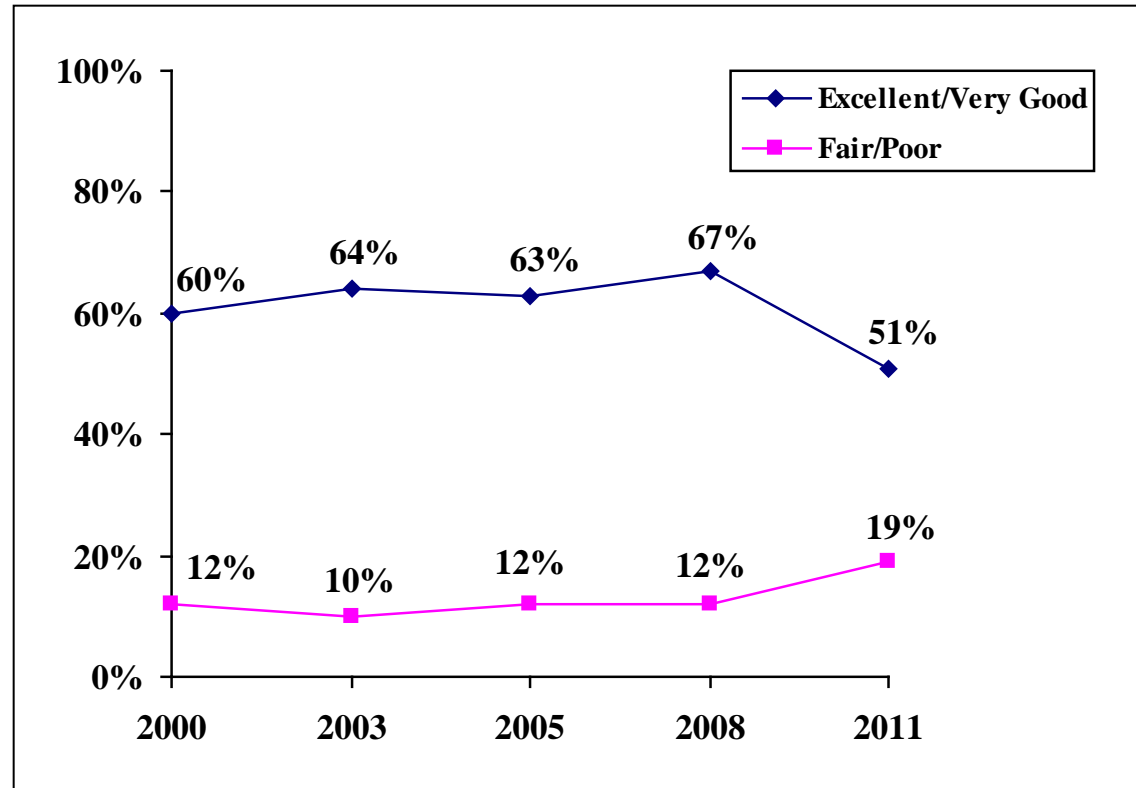
# General Health



# Rate Own Health

2010

- Excellent or Very Good
  - WI: 57%
  - US: 55%
- Fair or Poor
  - WI: 14%
  - US: 15%



# Routine Procedures

- Routine checkup 2000

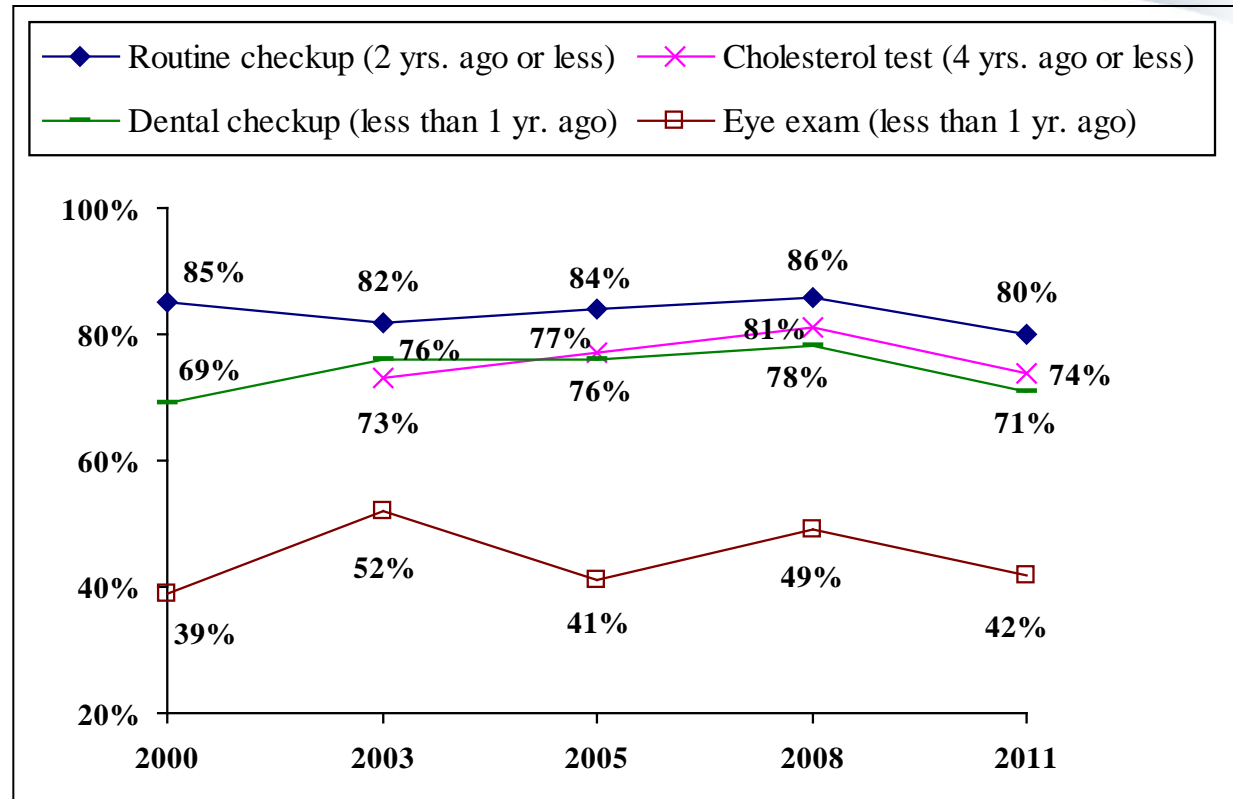
- WI: 79%
- US: 84%

- Cholesterol test 2010

- WI: 77%
- US: 77%
- HP2020 Goal: 82%

- Dental checkup 2010

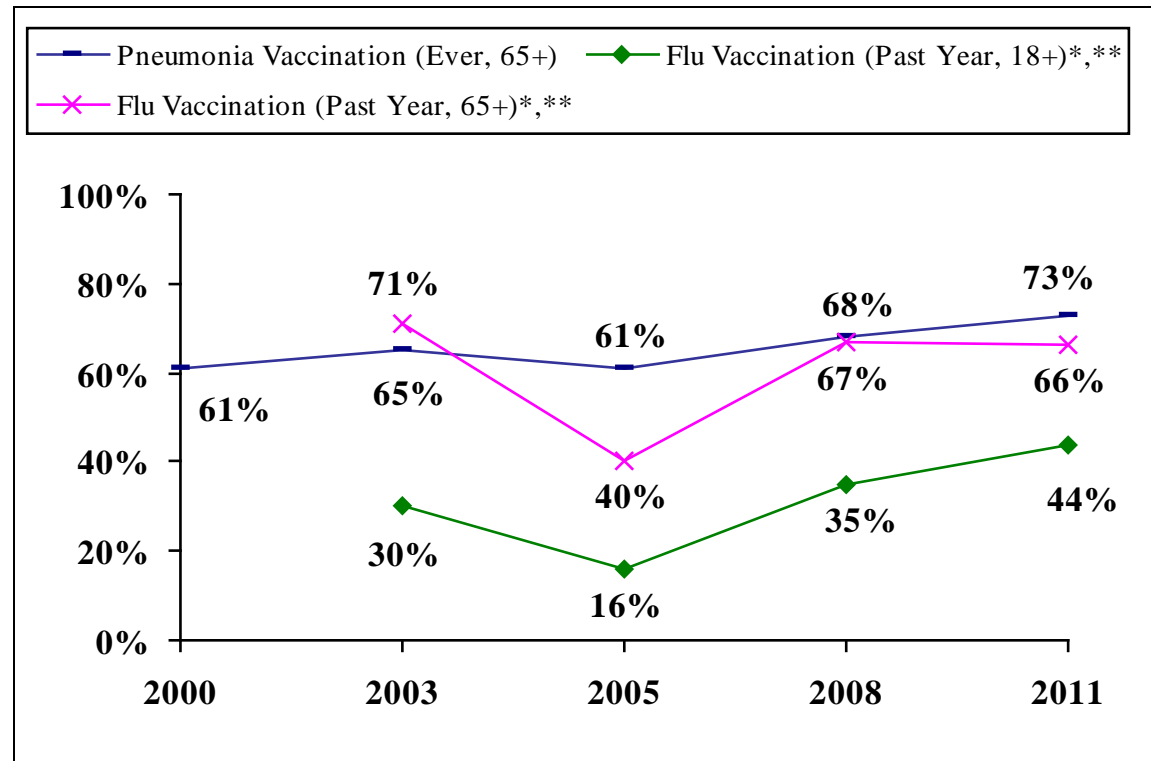
- WI: 75%
- US: 70%
- HP2020 Goal: 49%





# Vaccinations

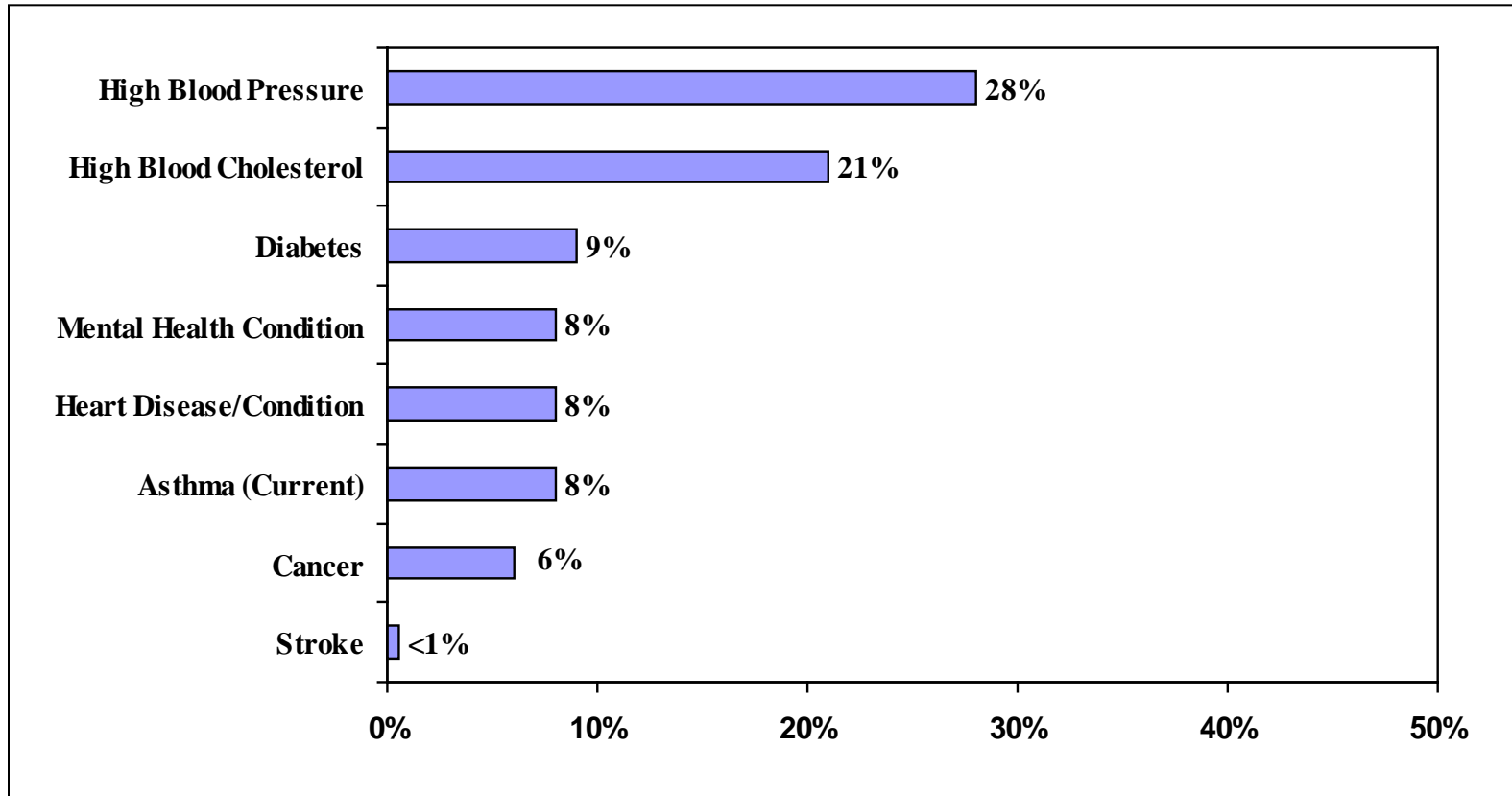
- Pneumonia vaccination (65+) 2010
  - WI: 73%
  - US: 69%
  - HP2020 Goal: 90%
- Flu vaccination (65+) 2010
  - WI: 68%
  - US: 68%
  - HP2020 Goal: 90%



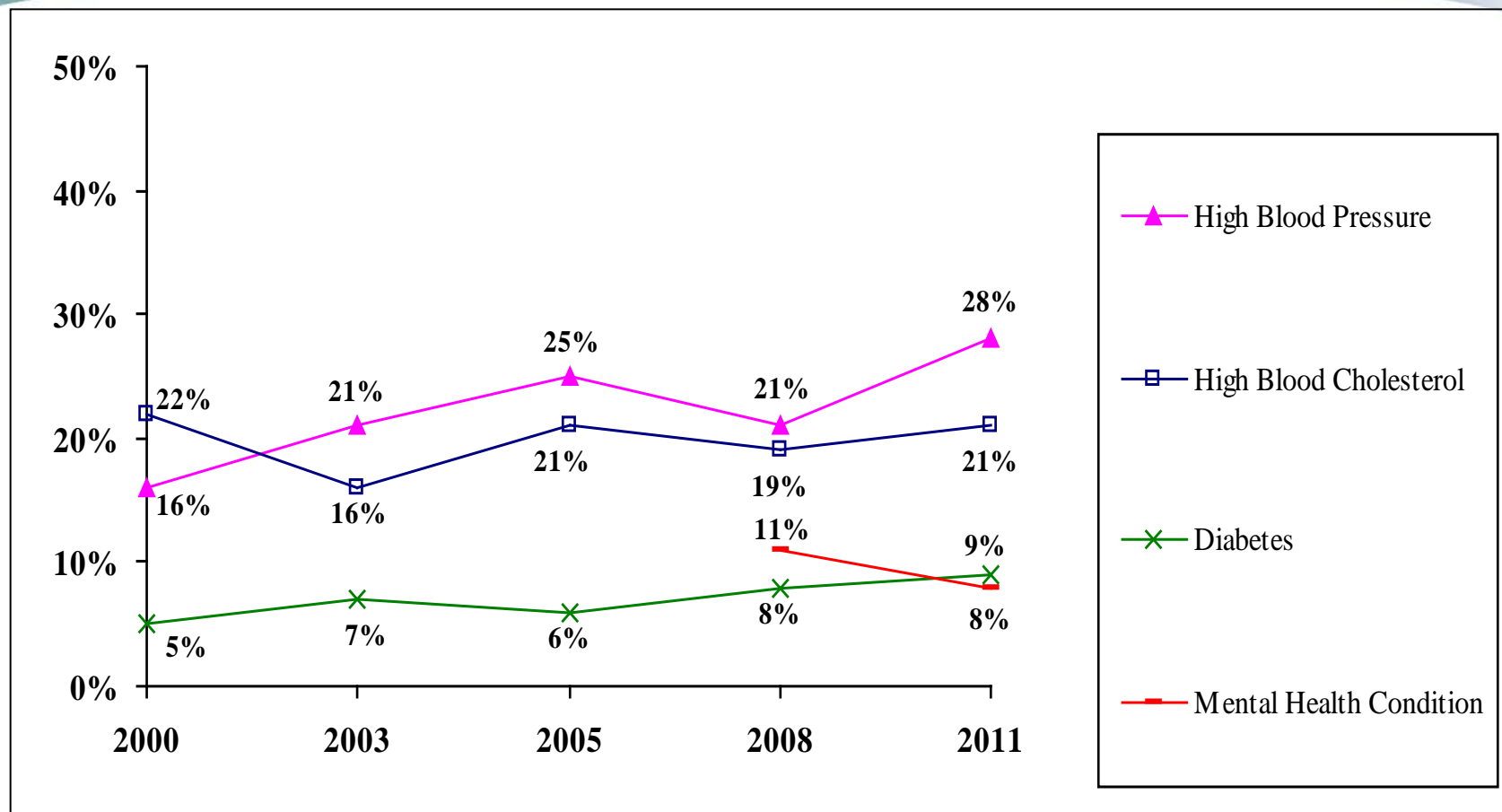
\* In 2005, "nasal spray" was added.

\*\* For a time in the 2004/2005 flu season there was a limited supply of flu vaccinations. During that period, it was only offered to persons in high-risk categories.

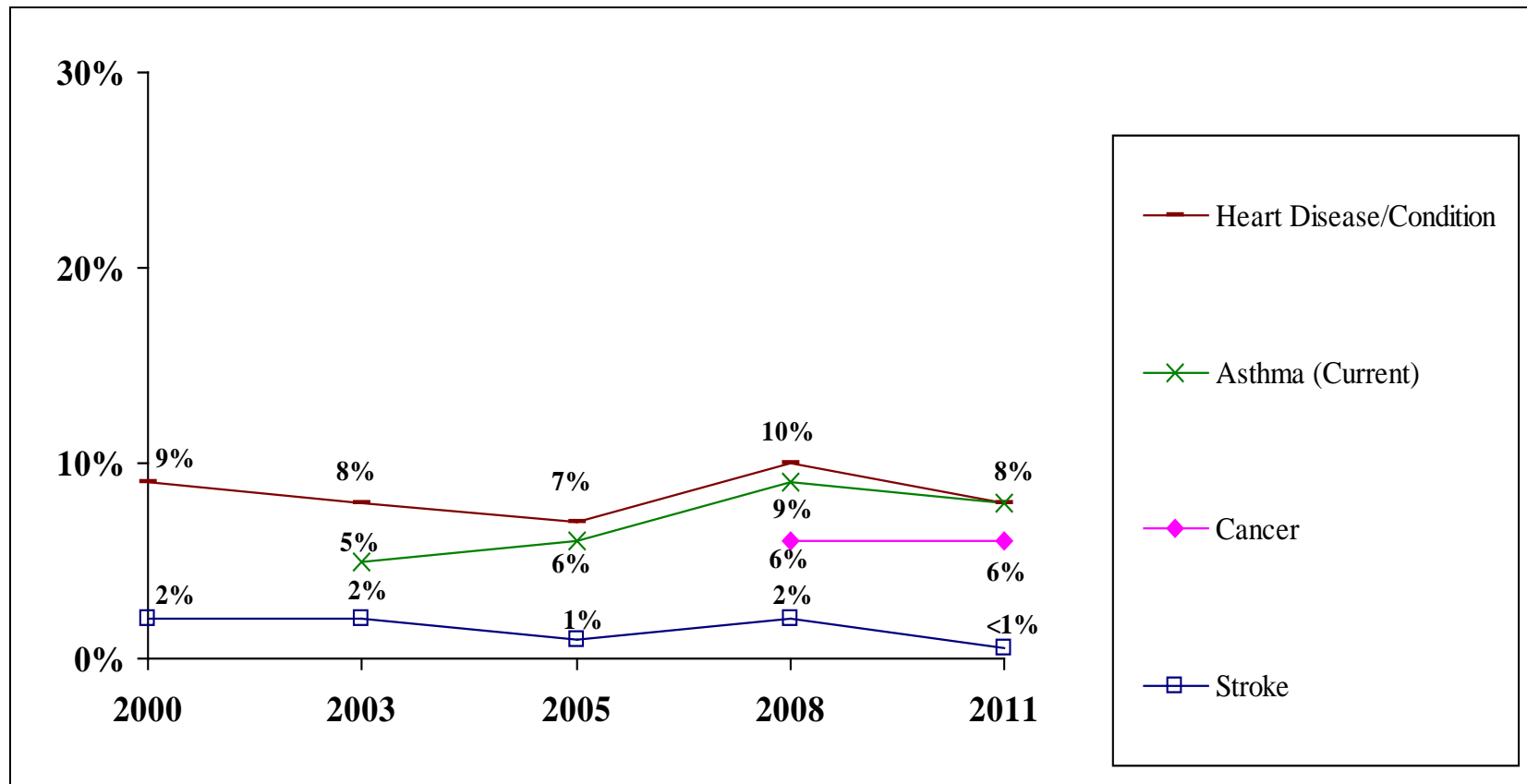
# Health Conditions Past 3 Years (2011)



# Health Conditions Past 3 Years



# Health Conditions Past 3 Years



# Condition Controlled Through Medication, Exercise or Lifestyle Changes (2011)

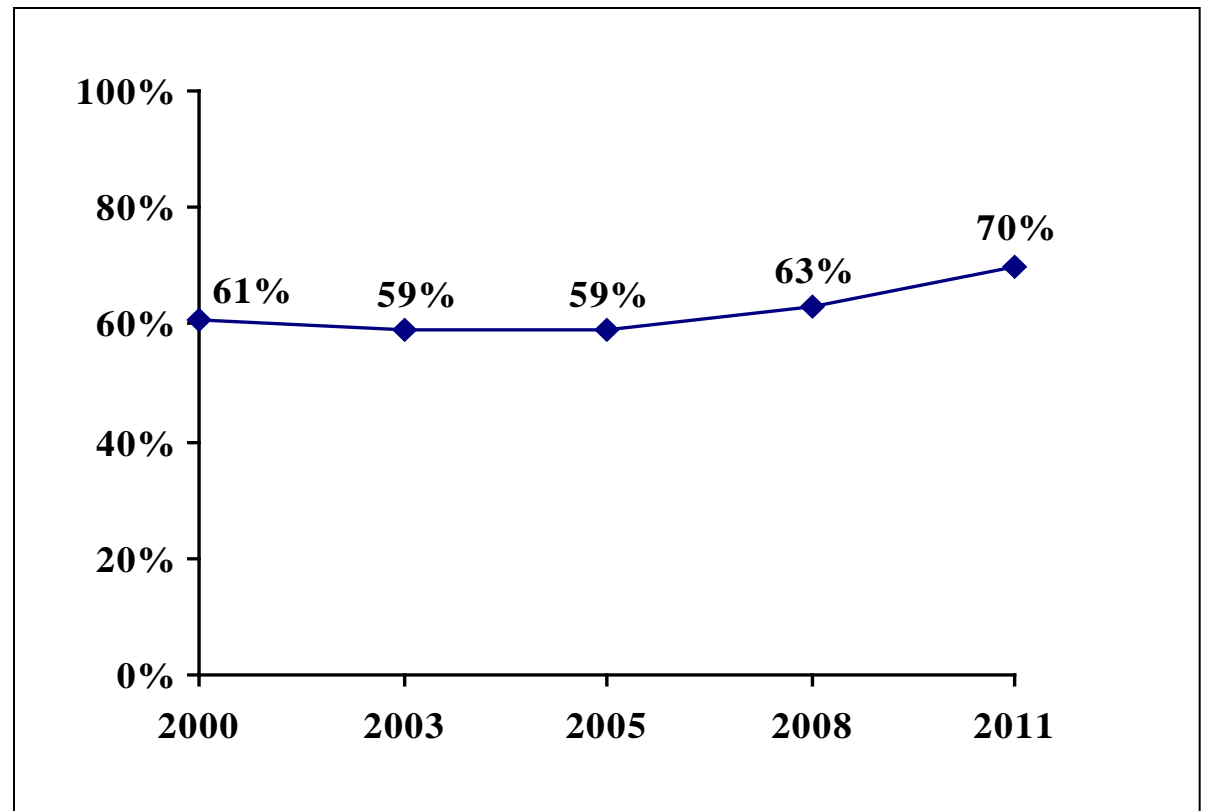
(n=)	Percent
High Blood Pressure (110)	97%
High Blood Cholesterol (83)	88%
Diabetes (35)	69%
Heart Disease/Condition (33)	97%
Asthma (32)	91%
Mental Health Condition (30)	100%

# Exercise and Nutrition



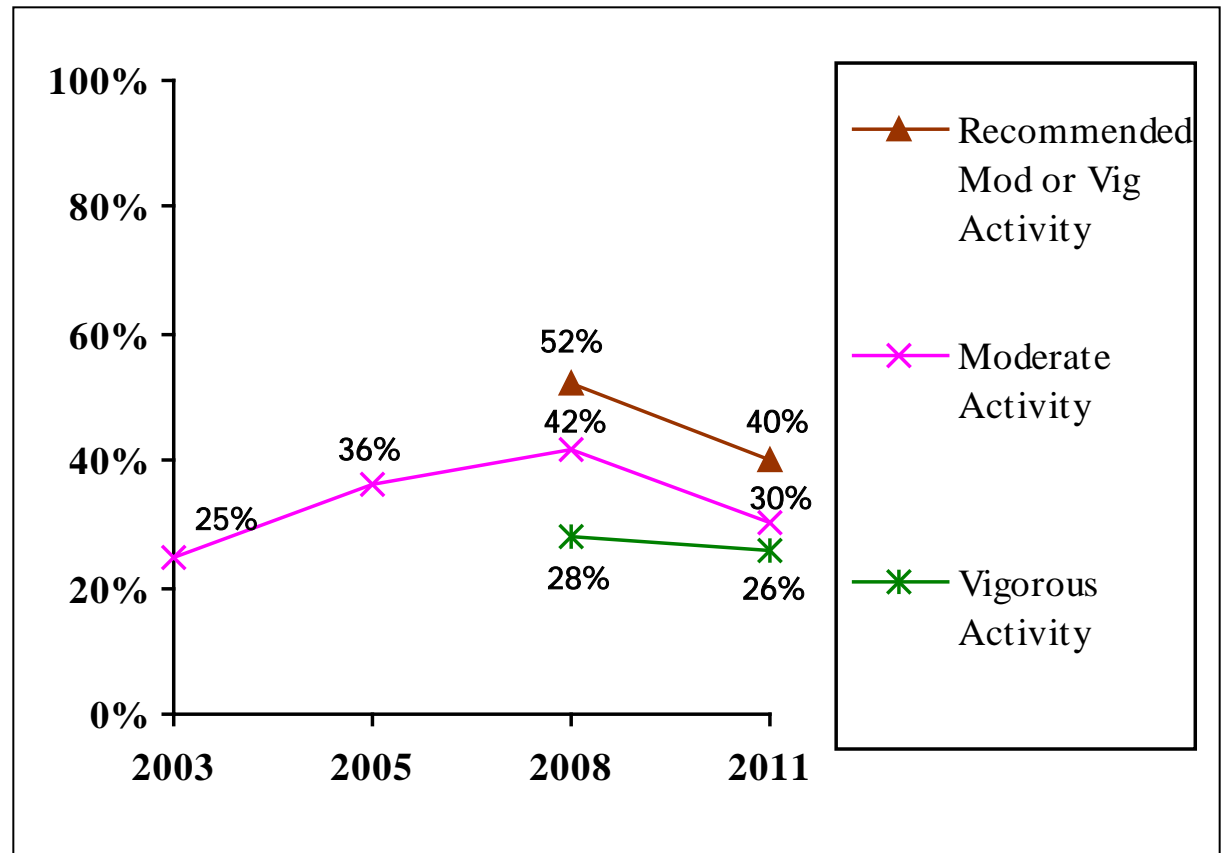
# Body Weight

- Overweight 2010
  - WI: 64%
  - US: 64%
  - HP2020 Goal: 34% healthy weight  
i.e. 66% overweight or obese



# Physical Activity<sup>1</sup>

- Recommended Moderate or Vigorous Activity 2009
  - WI: 53%
  - US: 51%
- Moderate Activity 2005
  - WI: 42%
  - US: 33%
- Vigorous Activity 2009
  - WI: 31%
  - US: 29%

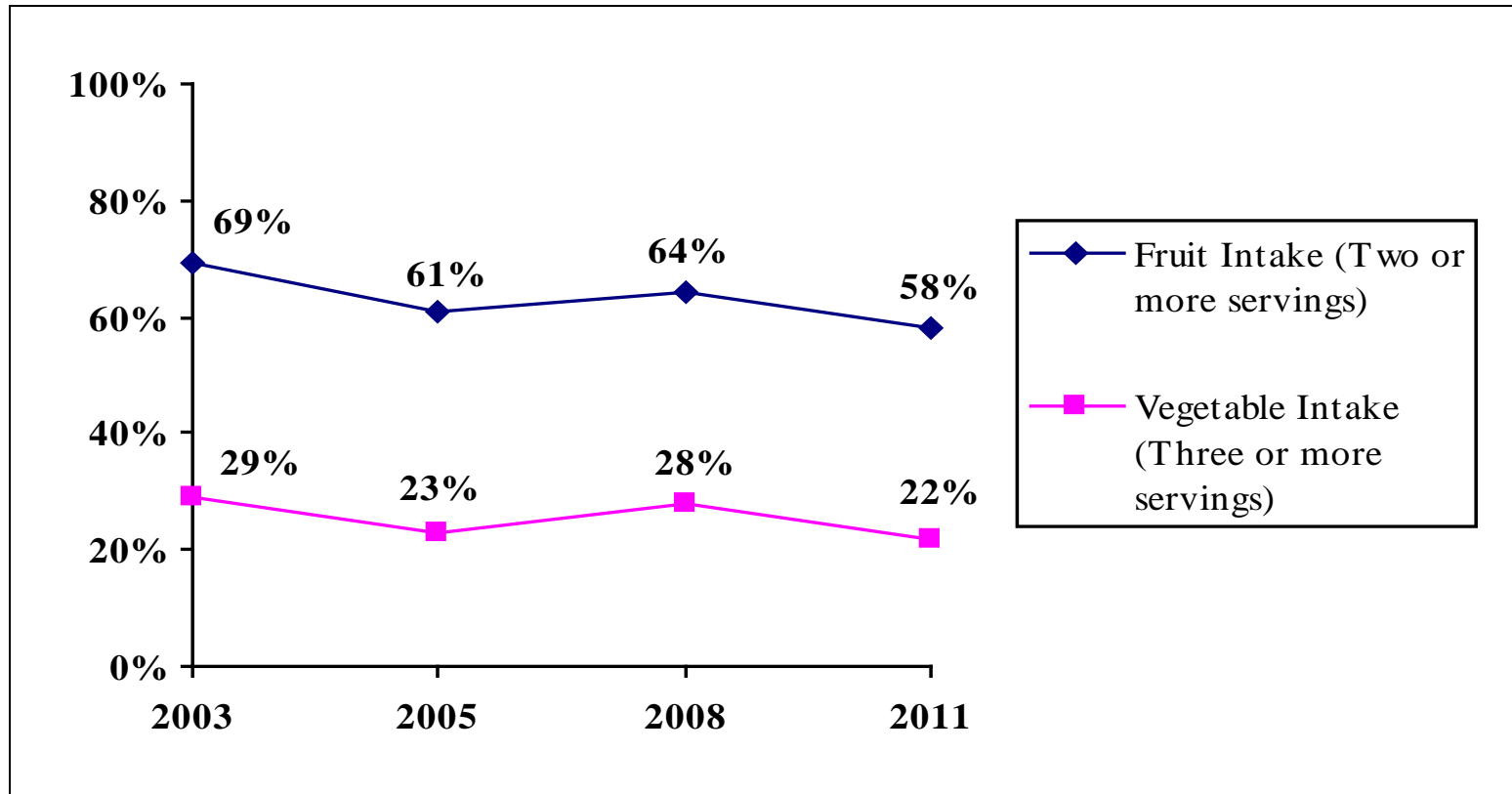


<sup>1</sup>Moderate activity: 5 times a week for 30 or more minutes/time

Vigorous activity: 3 times a week for 20 or more minutes/time



# Nutrition on an Average Day

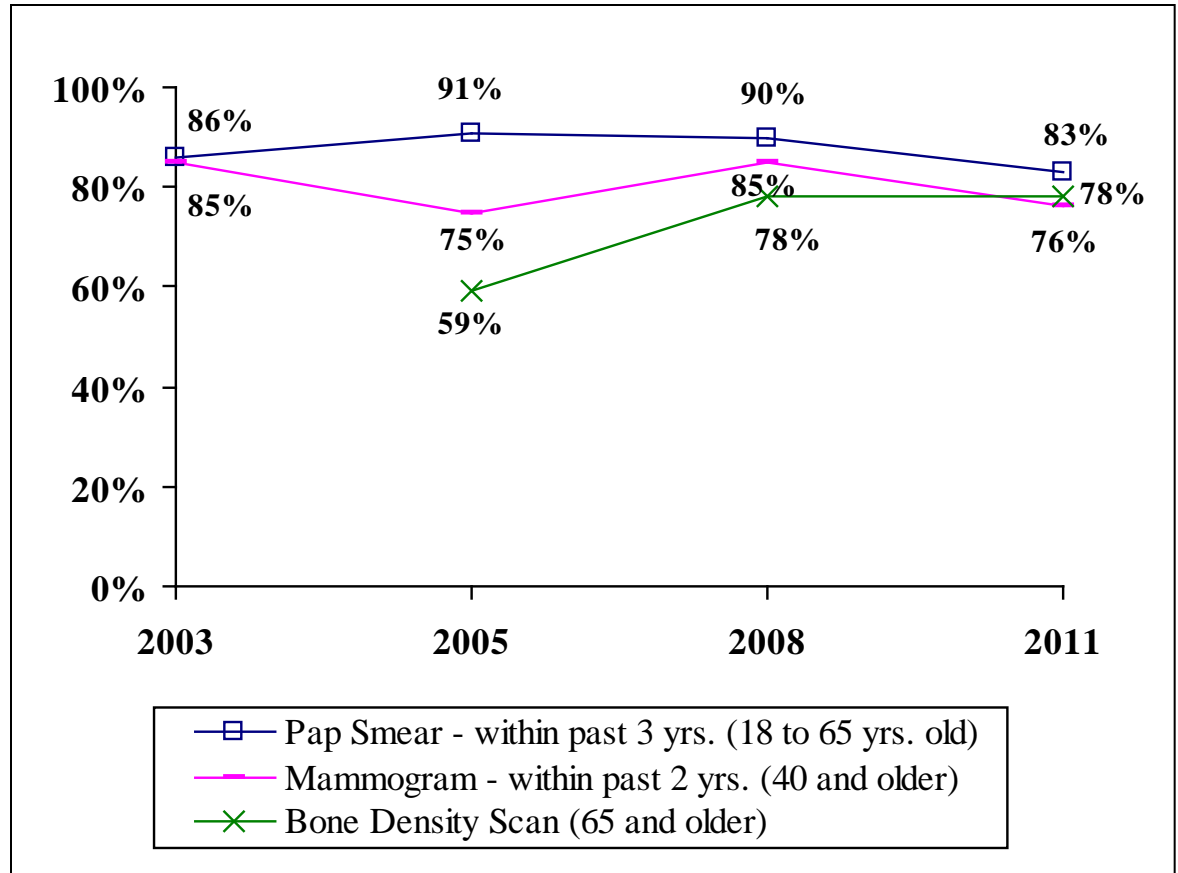


# Early Detection and Prevention of Cancer

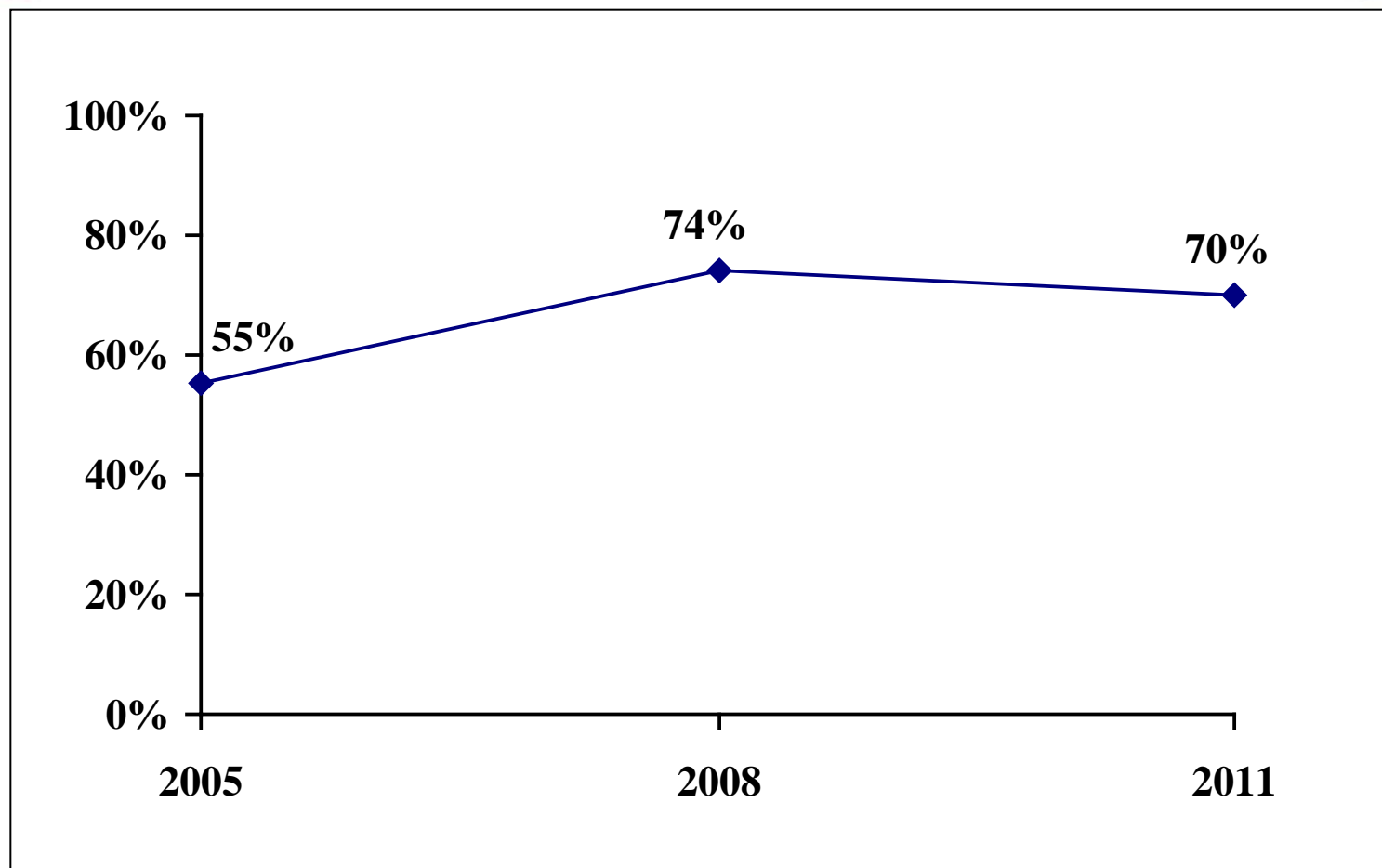


# Women's Health

- Pap Smear (18+) 2010
  - WI: 85%
  - US: 81%
  - HP2020 Goal (21-65 years old): 93%
- Mammogram (40+) 2010
  - WI: 79%
  - US: 76%

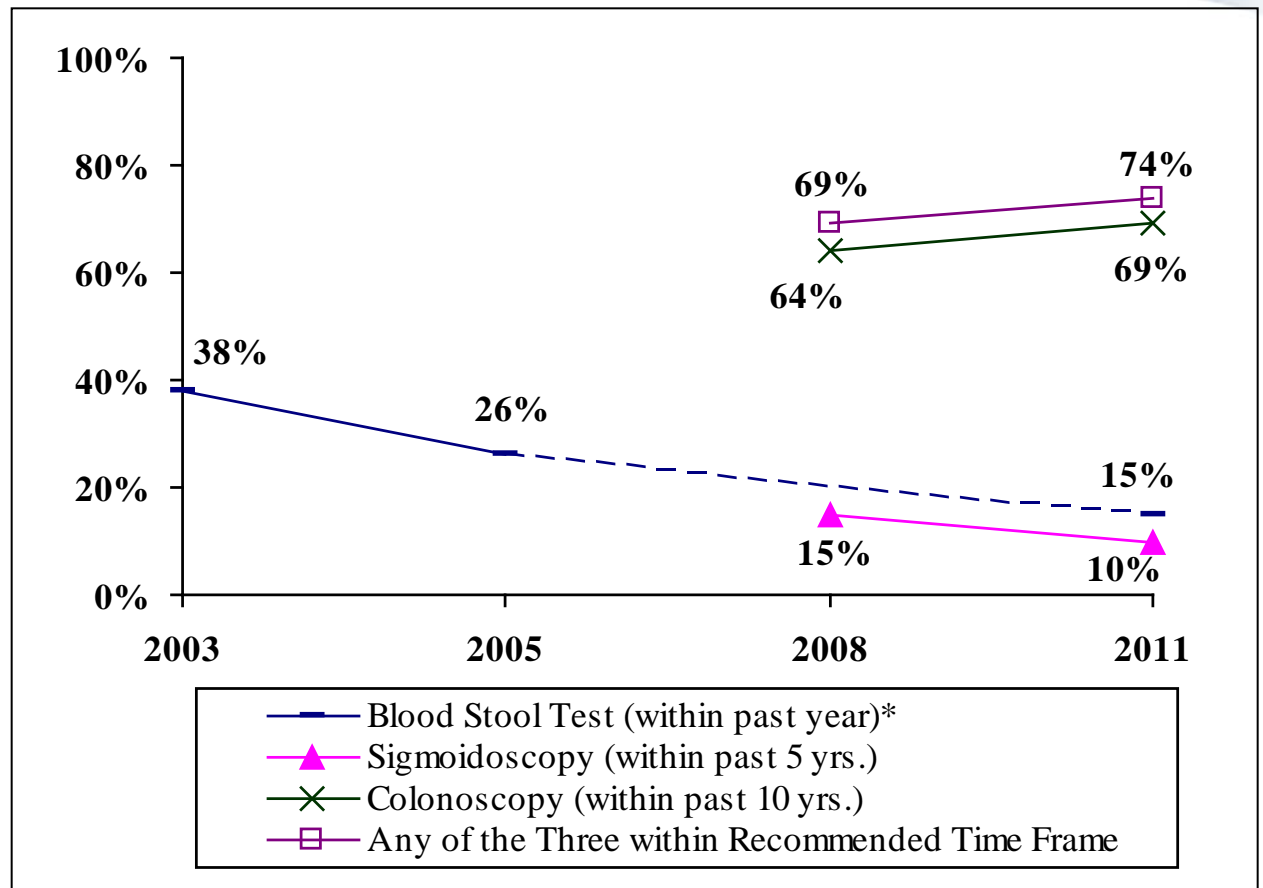


# Prostate Cancer Screening [PSA or DRE] Within Past 2 Years (40 and Older)



# Colorectal Cancer (50 and Older)

- Screening in Recommended Time Frame:
  - HP2020 Goal: 71%

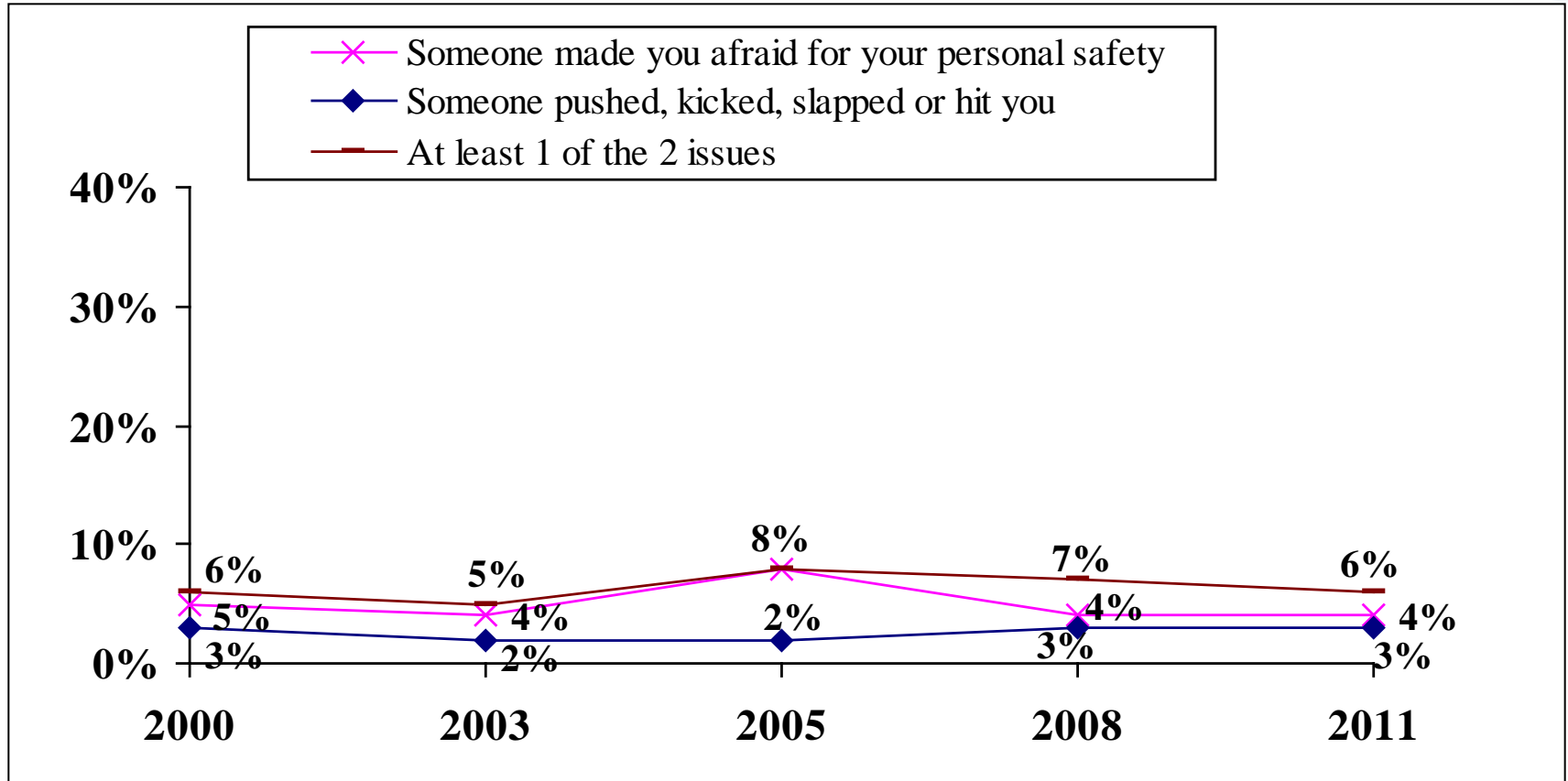


\*Not asked in 2008

Safety



# Personal Safety Issues (Past Year)



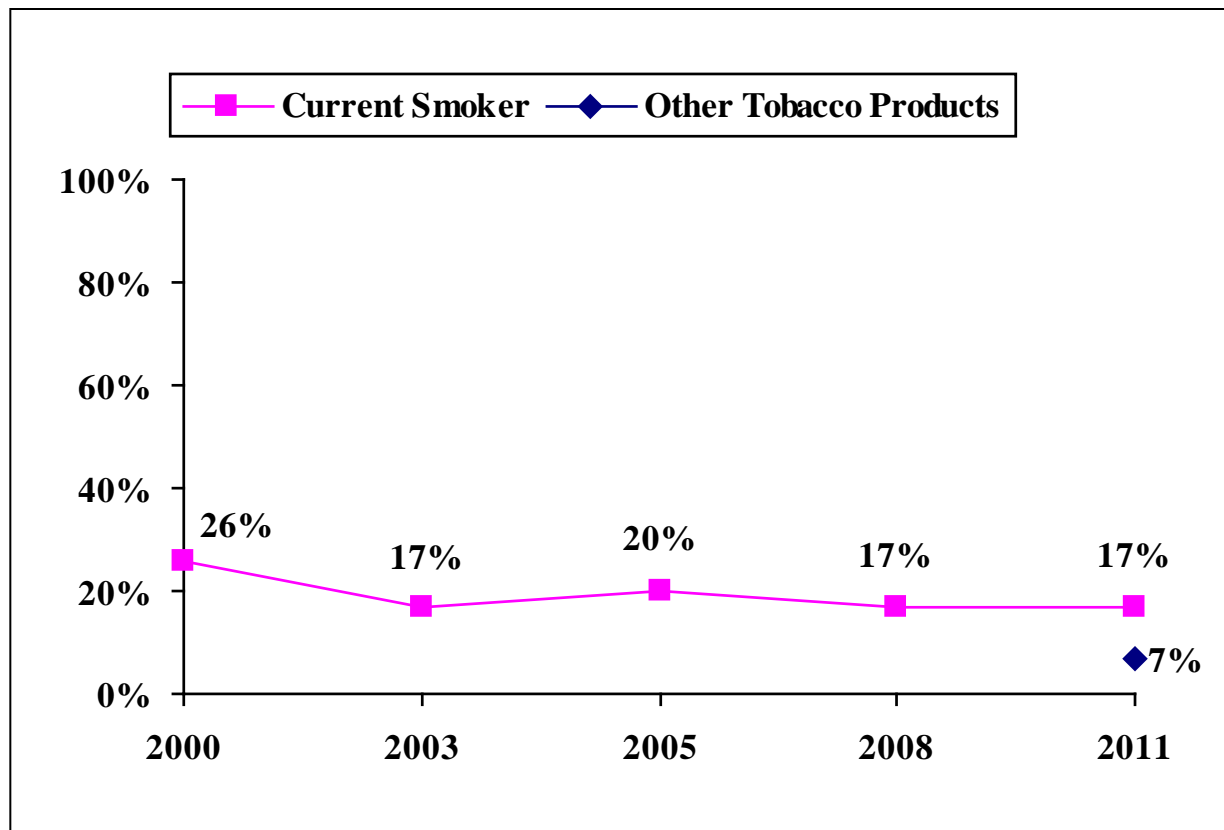
# Tobacco Use





# Tobacco Use (Past 30 Days)

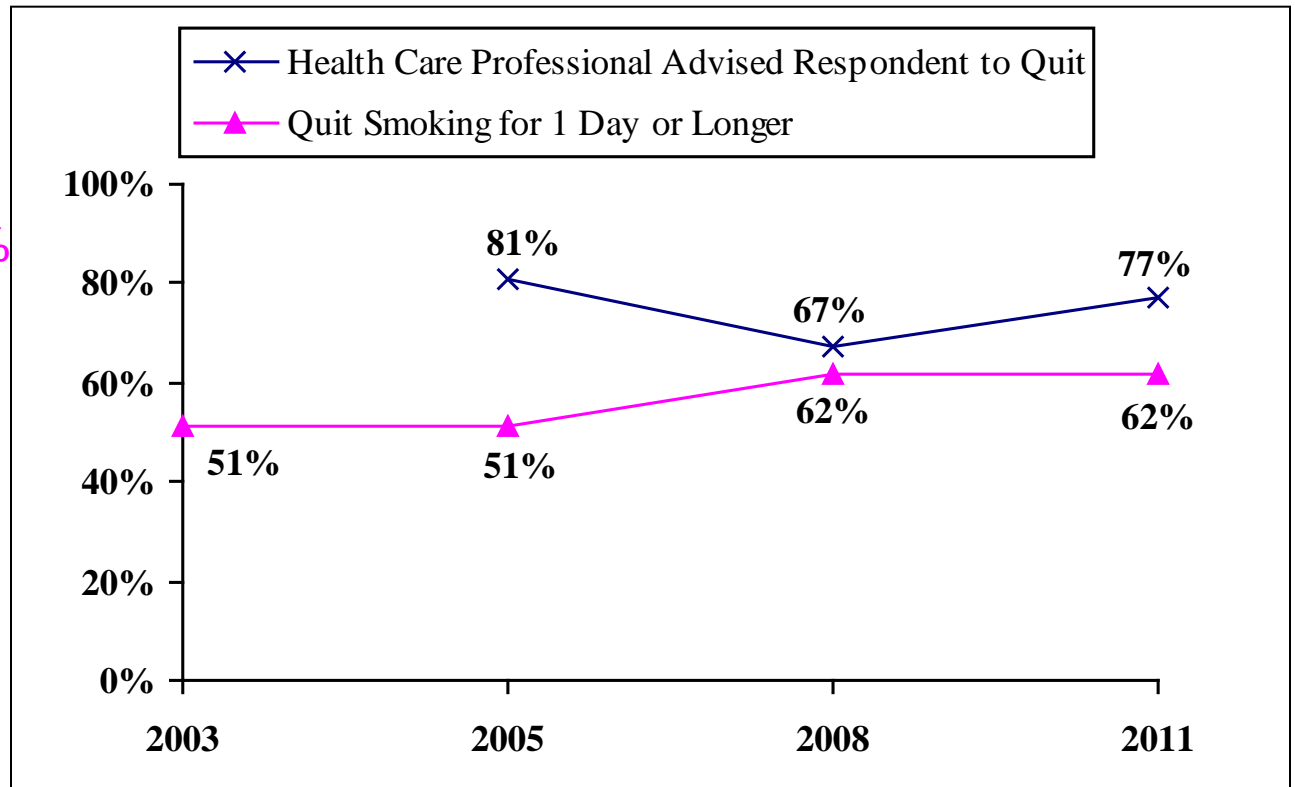
- Current Smokers 2010
  - WI: 19%
  - US: 17%
  - HP2020 Goal: 12%



# Smoking Cessation in Past 12 Months (Current Smokers)

- Tried to Quit 2005

- WI: 49%
- US: 56%
- HP2020 Goal: 80%



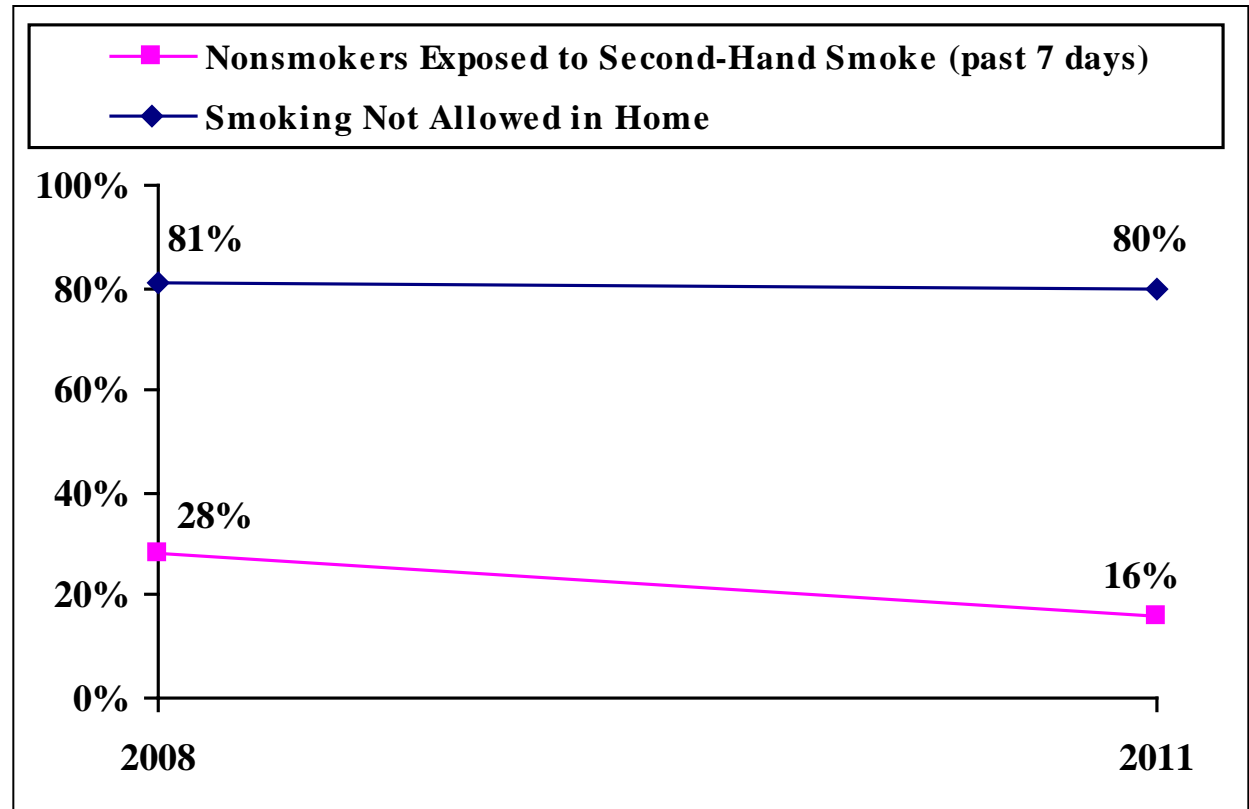
# Exposure to Cigarette Smoke

## Smoking Prohibited at Home 2003

- WI: 75%

## Nonsmokers Exposed to Second-Hand Smoke

- HP2020 Goal: 34%

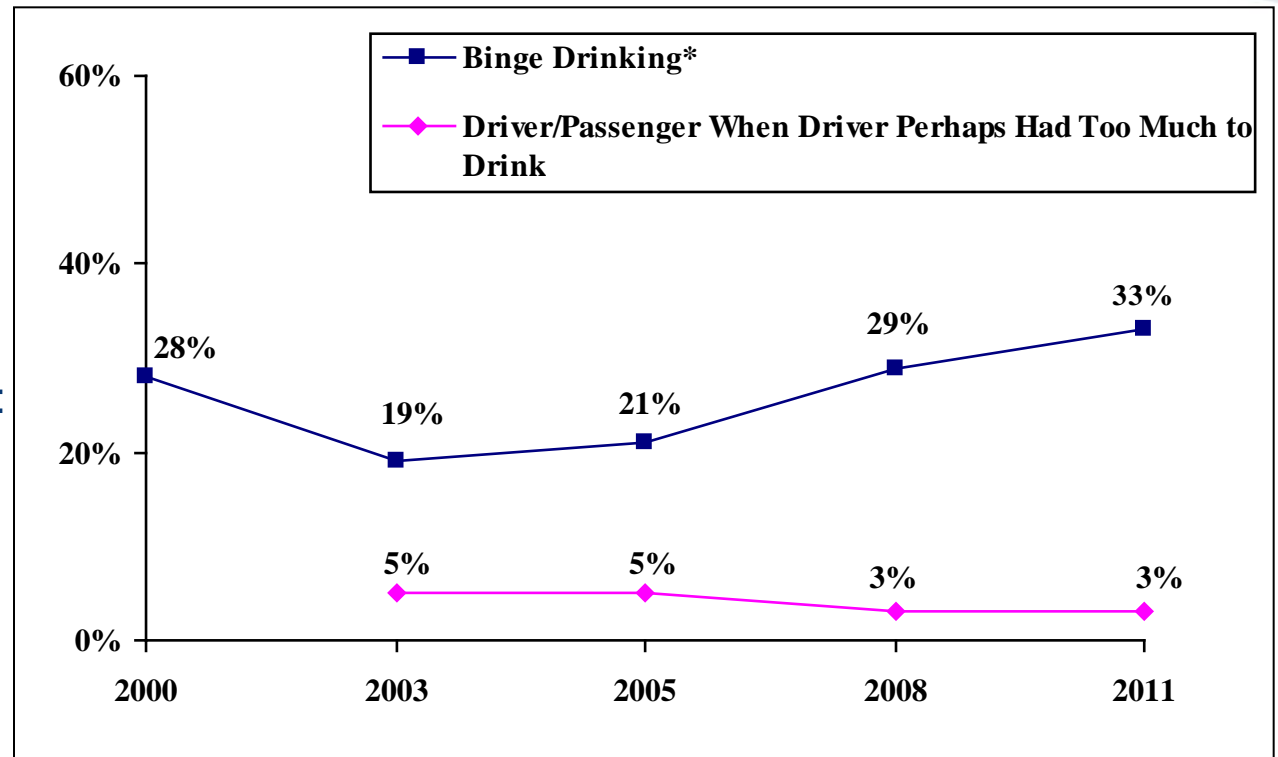


# Alcohol Use



# Alcohol Use in Past Month

- Binge Drinking 2010 [Male 5+; Female 4+]
  - WI: 22%
  - US: 15%
  - HP2020 Goal [Male & Female 5+]: 24%

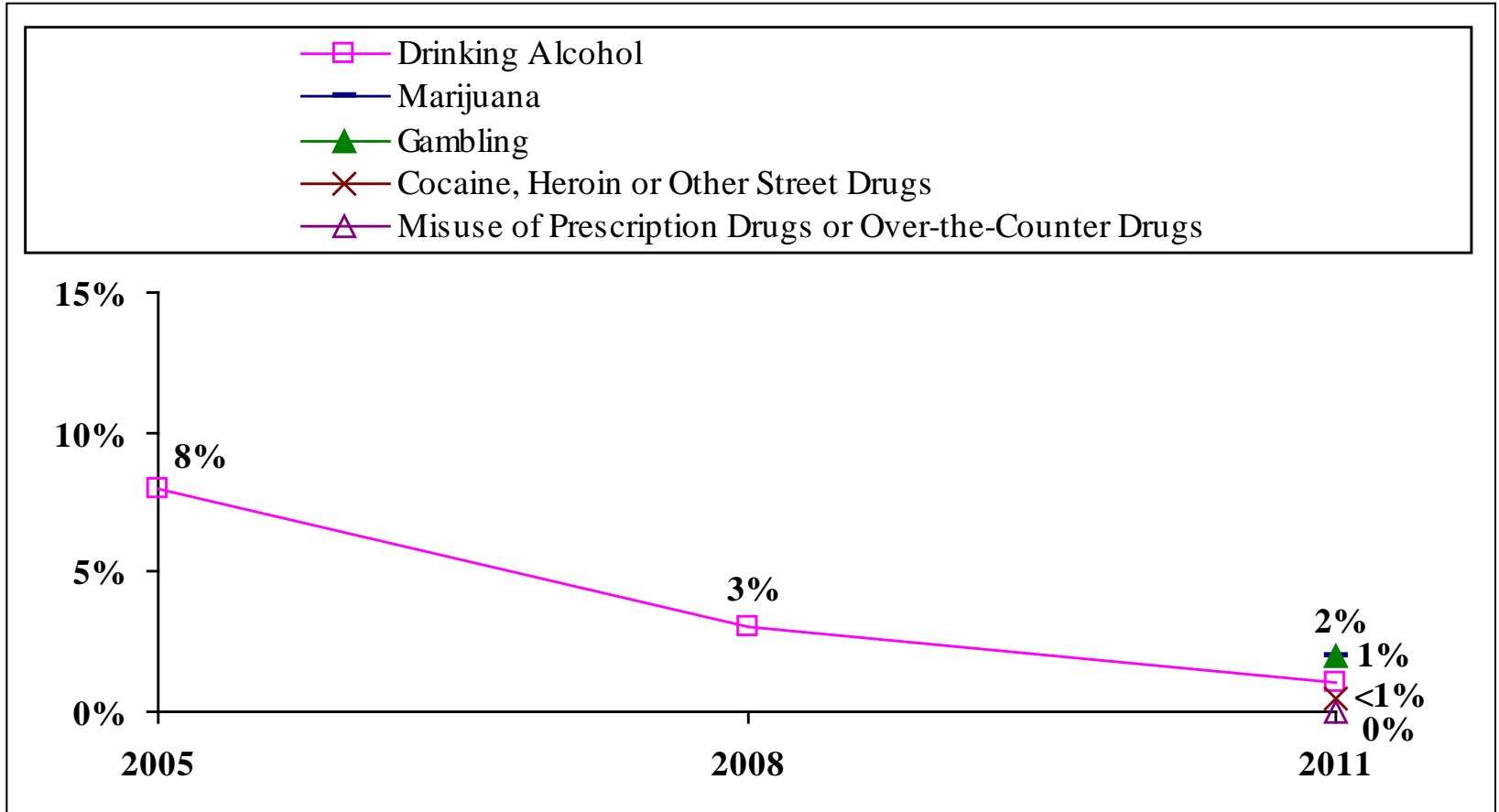


\*In 2003 and 2011, "4 or more drinks" for females and "5 or more" for males was used; in all other years, "5 or more drinks" was used for both males and females.

# Household Problems

The background features a decorative design. A thick, curved bar spans across the middle of the page, transitioning from a teal color on the left to a dark blue color on the right. In the upper right corner, there are several thin, white, curved lines that resemble a stylized globe or a network of connections.

# Household Problems In Past Year

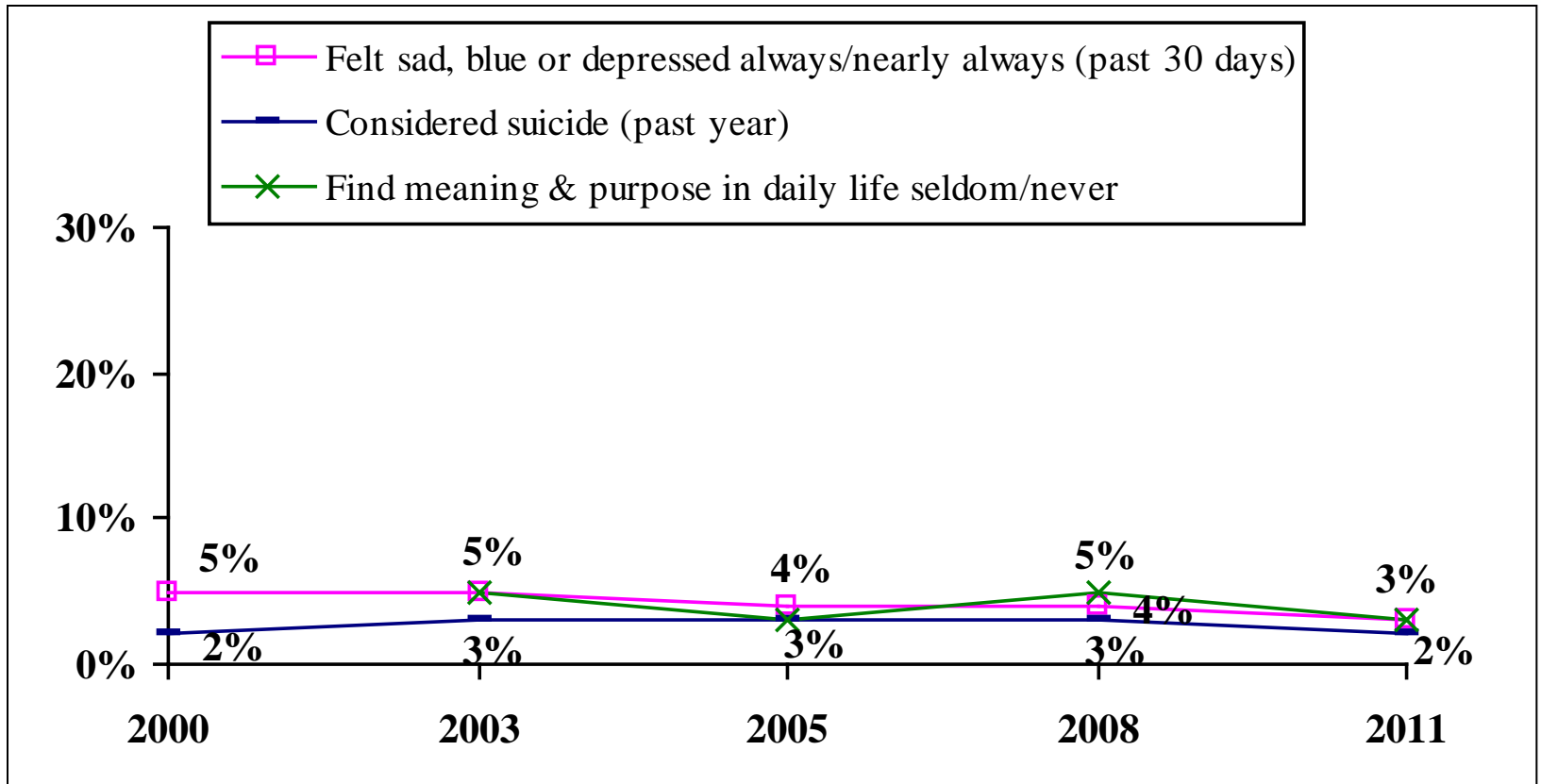


# Mental Health Status





# Mental Health Status



# Children In Household





## Child's Personal Doctor (2011)

	Percent
Has a Personal Health Doctor or Nurse Who Knows Child Well & Familiar with Health History	84%
Visited Personal Doctor or Nurse for Preventive Care During Past 12 Months	82%



## Child Did Not Receive Care Needed in Past 12 Months (2011)

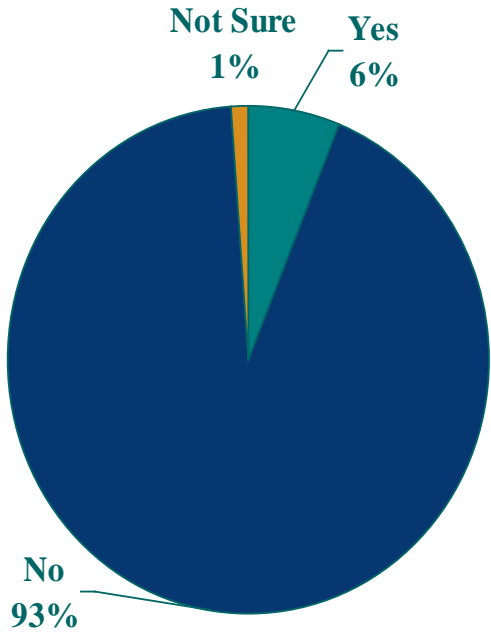
	Percent
Dental Care	7%
Medical Care	<1%
Specialist	0%



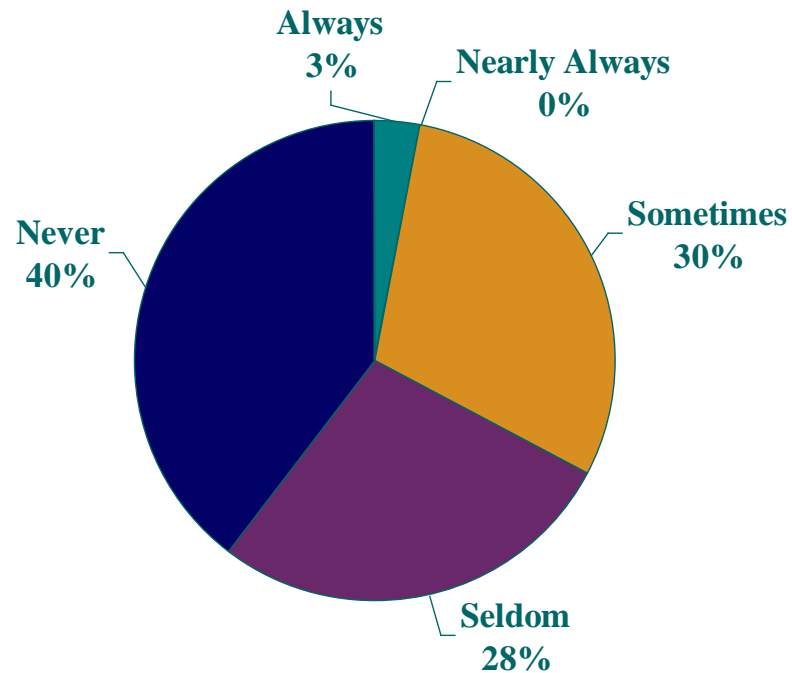
# Child 5 to 17 Years Old Nutrition and Physical Activity (2011)

	Percent
Fruit (Two or More Servings/Day)	71%
Vegetable (Three or More Servings/Day)	21%
Physical Activity (Five or More Days/ Week for at Least 60 Minutes Each)	63%

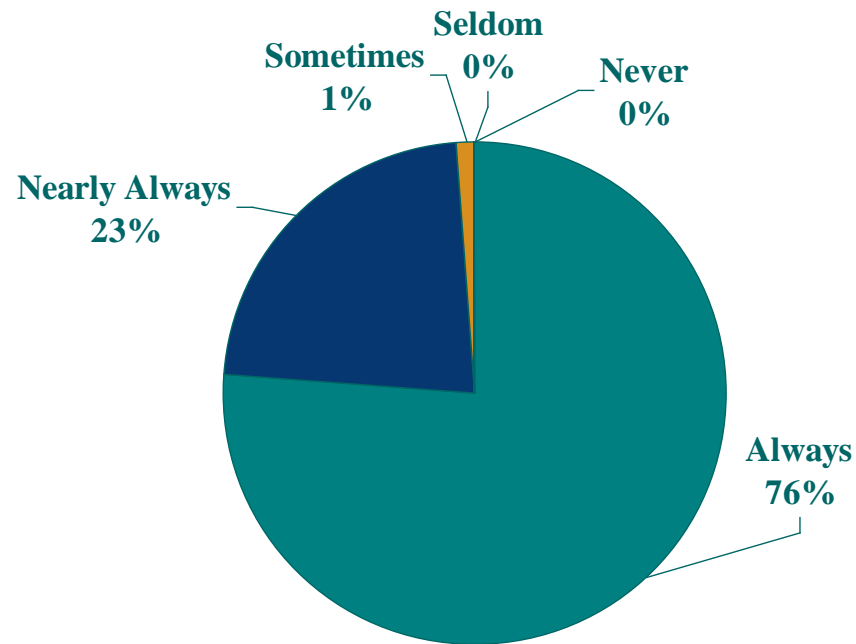
# Child Has Asthma (2011)



# Child 8 to 17 Years Old Unhappy, Sad or Depressed in Past Six Months (2011)



# Child is Safe in Community/Neighborhood (2011)







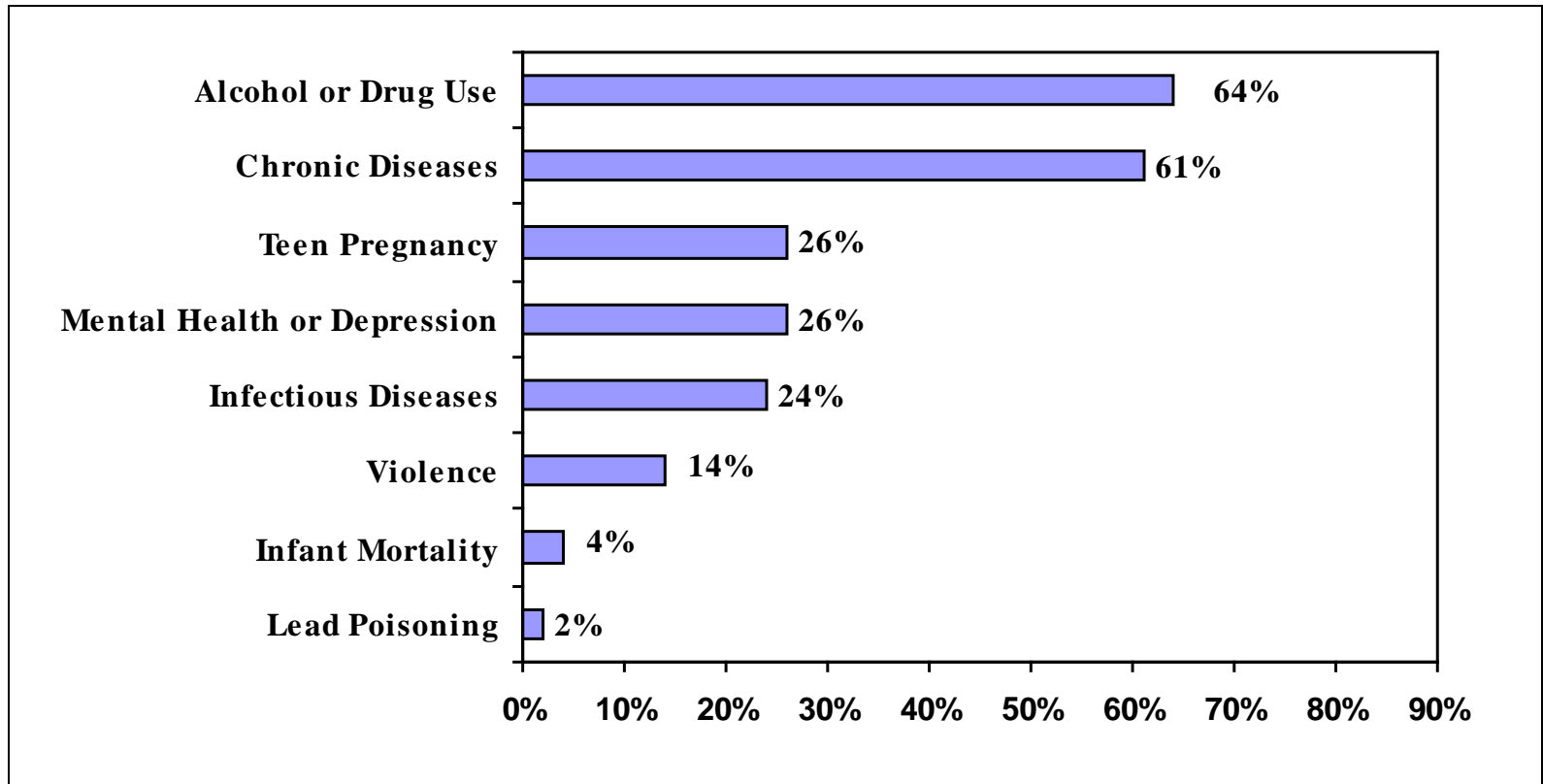
# Child 8 to 17 Years Old Experienced Bullying Past 12 Months (2011)

	Percent
Experienced Some Form of Bullying	19%
Verbally Bullied	18%
Physically Bullied	9%
Cyber Bullied	6%

# Community Health Issues



# Community Health Issues (2011)



# Select Key Findings of Need

- 10% currently not covered by some form of health care coverage vs. 0% HP2020
- 19% did not receive dental care needed in past year
- 74% cholesterol test (4 yrs ago or less) vs. 82% HP2020
- 73% pneumonia vaccination (Ever, 65+) vs. 90% HP2020
- 66% flu shot (past year, 65+) vs. 90% HP2020
- 83% pap smear (past 3 years, 18 – 65 y.o.) vs. 93% HP2020
- 62% tried to quit smoking past year vs. 80% HP2020
- 33% binge drinking (past month) vs. 24% HP2020

## Report Available at...

- [www.aurora.org/commhealth](http://www.aurora.org/commhealth)
- [www.chw.org](http://www.chw.org)
- [www.columbia-stmarys.org/Serving\\_Our\\_Community](http://www.columbia-stmarys.org/Serving_Our_Community)
- [www.communitymemorial.com/about\\_us/benefit.cfm](http://www.communitymemorial.com/about_us/benefit.cfm)
- [www.co.washington.wi.us](http://www.co.washington.wi.us)

# Next Steps

The slide features a decorative header with the text "Next Steps" in a dark blue font. Below the text is a thick, curved bar that is teal on the left and dark blue on the right. The background is white with a teal gradient at the top right, overlaid with several thin, white, curved lines that create a sense of motion or a network.