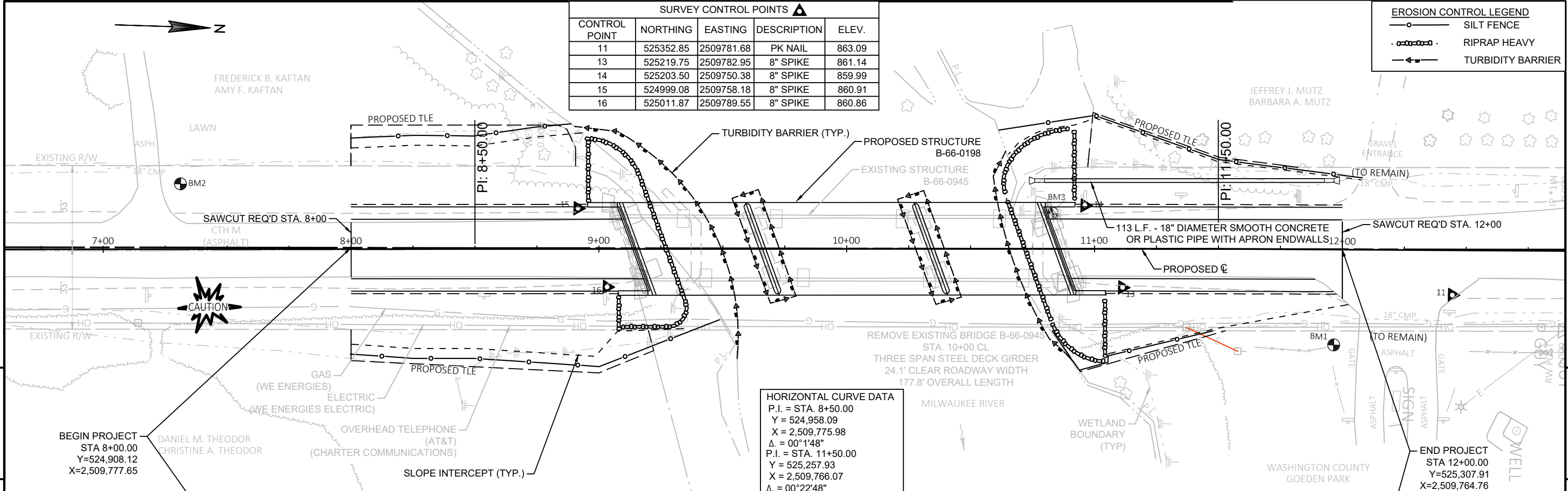


SURVEY CONTROL POINTS ▲				
CONTROL POINT	NORTHING	EASTING	DESCRIPTION	ELEV.
11	525352.85	2509781.68	PK NAIL	863.09
13	525219.75	2509782.95	8" SPIKE	861.14
14	525203.50	2509750.38	8" SPIKE	859.99
15	524999.08	2509758.18	8" SPIKE	860.91
16	525011.87	2509789.55	8" SPIKE	860.86

EROSION CONTROL LEGEND	
	SILT FENCE
	RIPRAP HEAVY
	TURBIDITY BARRIER



HORIZONTAL CURVE DATA	
P.I. = STA. 8+50.00	Y = 524,958.09
X = 2,509,775.98	Δ = 00°1'48"
P.I. = STA. 11+50.00	Y = 525,257.93
X = 2,509,766.07	Δ = 00°22'48"

BENCH MARKS ●				
NO.	STA.	DESCRIPTION	OFFSET	ELEV.
1	11+96.72	3/4" REBAR	38.70' RT	860.75
2	7+31.21	3/4" REBAR	26.07' LT	858.91
3	10+83.07	NW WING WALL	14.26' LT	861.90

STA. 10+00 STRUCTURE B-66-0198
THREE SPAN (51', 68', & 51' SPANS)
CONCRETE HAUNCHED SLAB
170.0' OVERALL LENGTH
37.33' CLEAR ROADWAY WIDTH
20° RHF SKEW

EARTHWORK SUMMARY
STA. 8+00 - STA. 12+00
COMMON EXC. XXX C.Y.
FILL XXX C.Y.
FILL EXPANSION XXX C.Y.
BORROW XXX C.Y.

HW 100 EL. 856.82'
OBSERVED WATER EL. 850.00'
(5-9-2017)
STREAMBED EL. 846.85'

