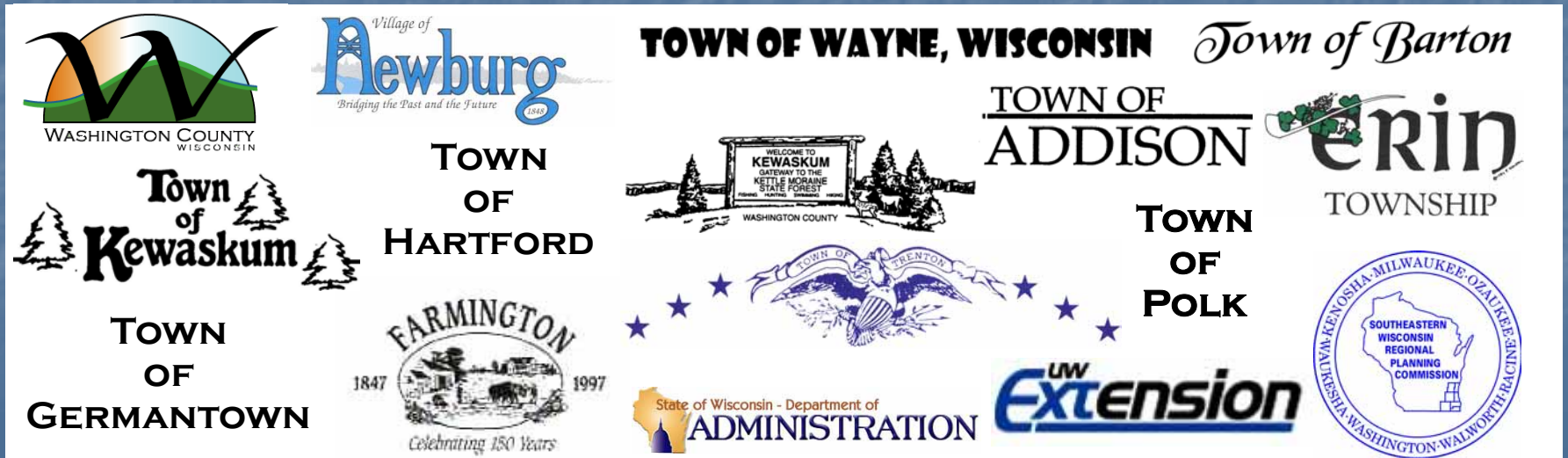


# Multi-Jurisdictional Comprehensive Plan

Work Program

# Work Program

- 10 month process
- Preparation for grant application
- Prepared by:



# Introduction

- The planning process satisfies the comprehensive planning requirements by State statute
- Multi-jurisdictional plan for County and Town of Germantown
- Local plans for Village of Kewaskum, and Towns of Addison, Barton, Erin, Farmington, Hartford, Kewaskum, Trenton, and Wayne
- Village of Newburg working with Ozaukee County to create their comprehensive plan
  - Will work with Washington County in the development of a multi-jurisdictional comprehensive plan



# Assumptions

- Study area includes all of Washington County although plan recommendations will be limited to planning partners
- Design year 2035
- Preparation of plan will primarily involve update & incorporation of existing plans
- Plan would incorporate land use, master, and comprehensive plans and official maps adopted by cities and villages in the County
- Plan would incorporate town land use, master, and comprehensive plans based on established criteria

# Assumptions

- The Comp Plan will include each of the 9 planning elements by State statute
- The Comp Plan will address each of the planning goals by State statute
- Partnering governing bodies intend to adopt the Comp Plan by ordinance prior to the end of the 36 month grant

# Report Format

- Multi-Jurisdictional County Comprehensive Plan
  - Introduction
  - Inventories
  - Planning Framework
  - Recommended Plan
  - Implementation



# Responsibilities of Washington County

- Provide cadastral and parcel information
- Administer the planning grant
- Coordinate and schedule meetings
- Act as liaison between local government partners, UW-Extension, and SEWRPC
- Conduct and document all meetings, public hearings, workshops, open houses, or other public participation sessions
- Prepare and mail agendas and meeting packets

# Responsibilities of Washington County

- Review draft plan chapters
- Prepare minutes of all meetings
- Present recommended comprehensive plan to PCPC & County Board
- County Board will review & adopt plan
- Develop a web site for comprehensive planning



# Responsibilities for Local Government Partners

- Assist in development of planning objectives
- Provide, upon request, all available plans, ordinances, and studies relevant to the planning process
- Assist with implementation of the public participation plan
- Conduct and document all meetings, public hearings, workshops, open houses, or other public participation sessions **sponsored** by the local government
- Review draft plan chapters
- Adopt by ordinance a comprehensive plan

# Responsibilities of SEWRPC

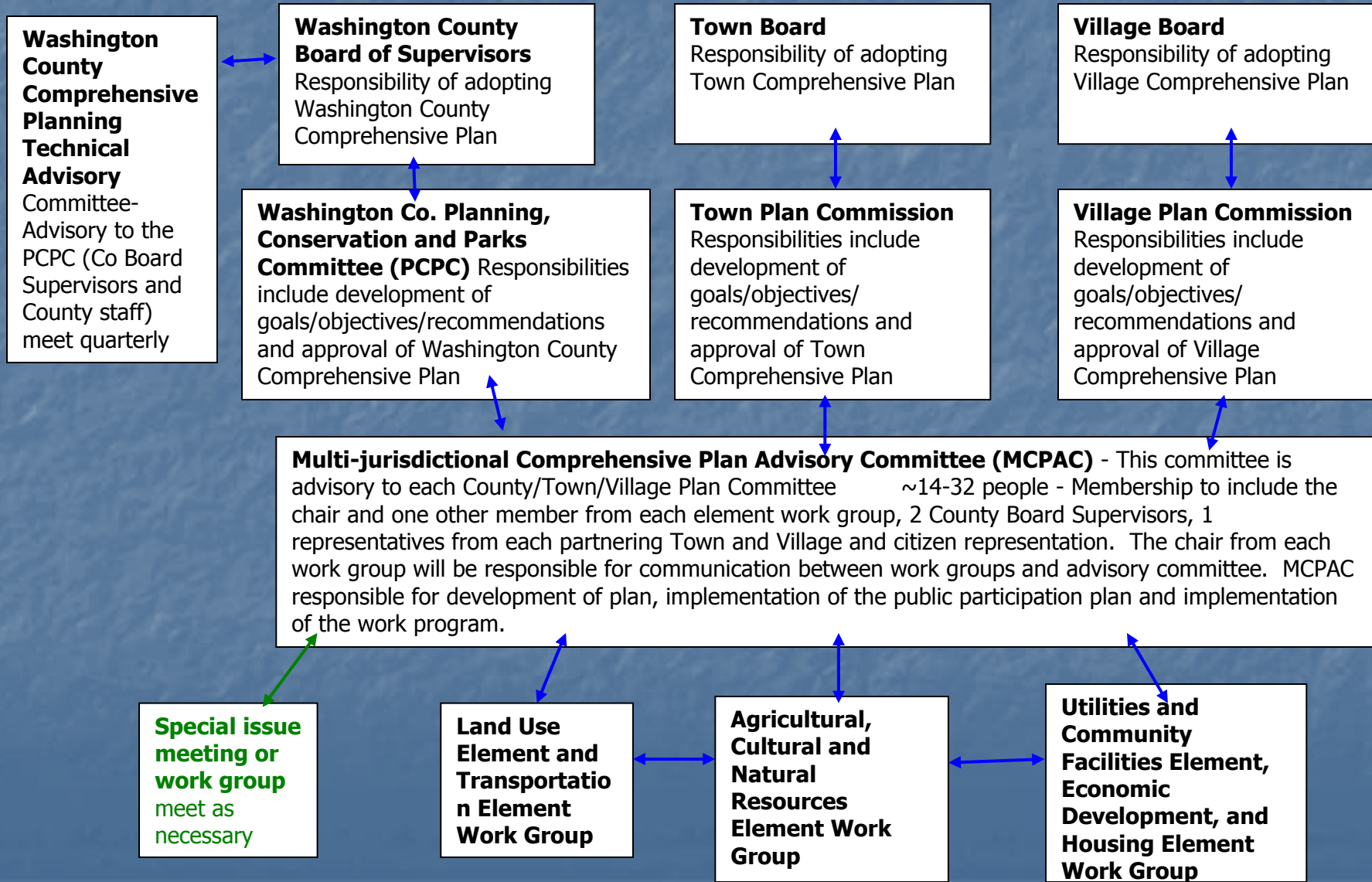
- Compile data provided by County, local governments, and State and Federal agencies
- Attend all Advisory Committee and PCPC meetings
- Assist in developing and carrying out the public participation plan
- Assist developing planning objectives, standards, and policies
- Develop population, household, and employment forecasts for the year 2035
- Prepare draft plan chapters

# Responsibilities of SEWRPC

- Provide digital files of all text, tables, figures, and maps included in the plan upon request
- Compile recommended plan
- Coordinate with County staff a presentation to County Board and PCPC
- Print adequate number of copies needed to meet statute requirements
- Produce recommended local comprehensive plan documents based on multi-jurisdictional plan
- Following adoption of local comprehensive plan, provide adequate number of copies to meet statute requirements



# Committee Structure



# Work Plan

## ■ **Step 1: Start up tasks**

- Develop framework for planning process
- Establish responsibilities
- Develop work program with partners
- Negotiate cooperative agreements with participating municipalities
- Prepare public participation plan
- County Board adopt public participation plan
- Prepare & submit grant application
- Prepare base maps

# Work Plan

## ■ **Step 2: Inventory/Background**

- Compile/document Census data
- Conduct/document housing inventory
- Conduct/document Ag/Nat/Cult. Resource inventory
- Conduct/document existing transportation facilities
- Conduct/document community facilities & utilities
- Conduct and document existing land uses
- Gather/document economic development information
- Report to MJAC and plan commissions
- Hold informational meetings on inventory findings



# Work Plan

## ■ **Step 3: Forecasts & Analysis**

- Prepare forecasts of population, households, and jobs for year 2035
- Identify opportunities and areas for redevelopment & Smart Growth areas
- Identify trends in land price, supply, & demand
- Develop 20 yr. projections for various land use categories
- Report findings to MJAC & plan commissions

# Work Plan

- **Step 4: Issue Identification/Visioning**
  - Prepare surveys and focus groups
  - Hold informational meetings on survey findings
  - Compile/Inventory/Summarize goals & objectives from existing land use-related plans by planning partners
  - MJAC develops goals, objectives, & vision for County
  - Meetings with local partners to determine local goals and objectives
  - Identify & summarize conflicts between plans and ordinances

# Work Plan

## ■ **Step 5: Prepare Key Plan Elements**

- Prepare issues and opportunities element
- Prepare land use element
- Prepare housing element
- Prepare transportation element
- Prepare utilities & community facilities element
- Prepare agriculture/natural/cultural resources element
- Prepare economic development element
- Synthesize elements into preliminary plan recommendations



# Work Plan

- **Step 6: Prepare Implementation Elements**
  - MJAC identifies activities to implement plan recommendations
  - Prepare implementation element
  - Prepare intergovernmental cooperation element
  - Prepare summary report

# Work Plan

- **Step 7: Plan Review/Refinement/Adoption**
  - Print/distribute recommended plan
  - Conduct public information workshops
  - Summarize public comments on plan
  - MJAC recommends plan to PCPC
  - Conduct public hearing on plan
  - PCPC recommends plan to County Board
  - County Board adopts plan by ordinance

# Work Plan

## ■ **Step 8: Plan Implementation**

- Print/distribute adopted plan
- Amend or adopt implementing ordinances as necessary
- County enters into cooperative agreements as desired