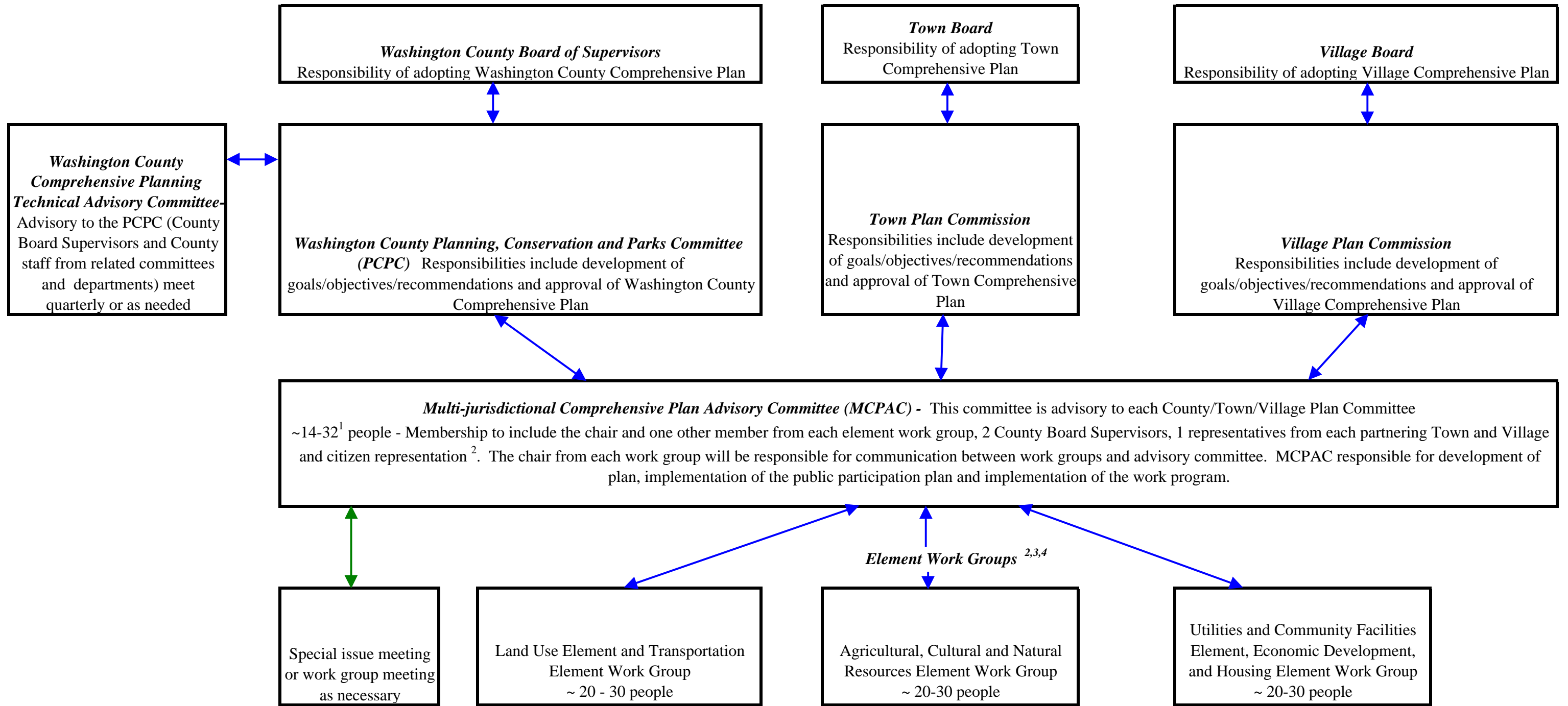


Appendix F. Multi-jurisdictional Planning Committee Structure
Washington County Multi-Jurisdictional Comprehensive Planning Committee Organization



Note:

1. The final number of individuals on the Multi-jurisdictional Comprehensive Plan Advisory Committee (MCPAC) will depend on the number of City/Town/Villages that partner with Washington County.
2. City/Town/Village representatives on the MCPAC and Element Work Groups to be C/T/V Board members or Plan Commission members appointed by each partnering municipality.
3. Work Group membership to include a representative from the County and each partnering community. Other members may include citizens and appropriate stakeholders for their respective elements. Each work group to have a chair and vice chair to oversee the meetings. Other County/C/T/V representatives will be encouraged to attend Work Group meetings. Appropriate local, county, and state staff would attend as Technical Advisory Members without voting powers.
4. Every Work Group to work on the Issues & Opportunities Element, Intergovernmental Cooperation Element and the Implementation Element as it relates to their work group element. Drafts of the Issues & Opportunities Element, Intergovernmental Cooperation Element and the Implementation Element will be compiled by the MCPAC.
5. Staff from Washington County and Southeastern Wisconsin Regional Planning Commission will attend all Work Group meetings, all Advisory Committee meetings and other special issue or working group meetings as necessary.
6. Advisory Committee and Work Group to meet monthly or as needed throughout planning process.