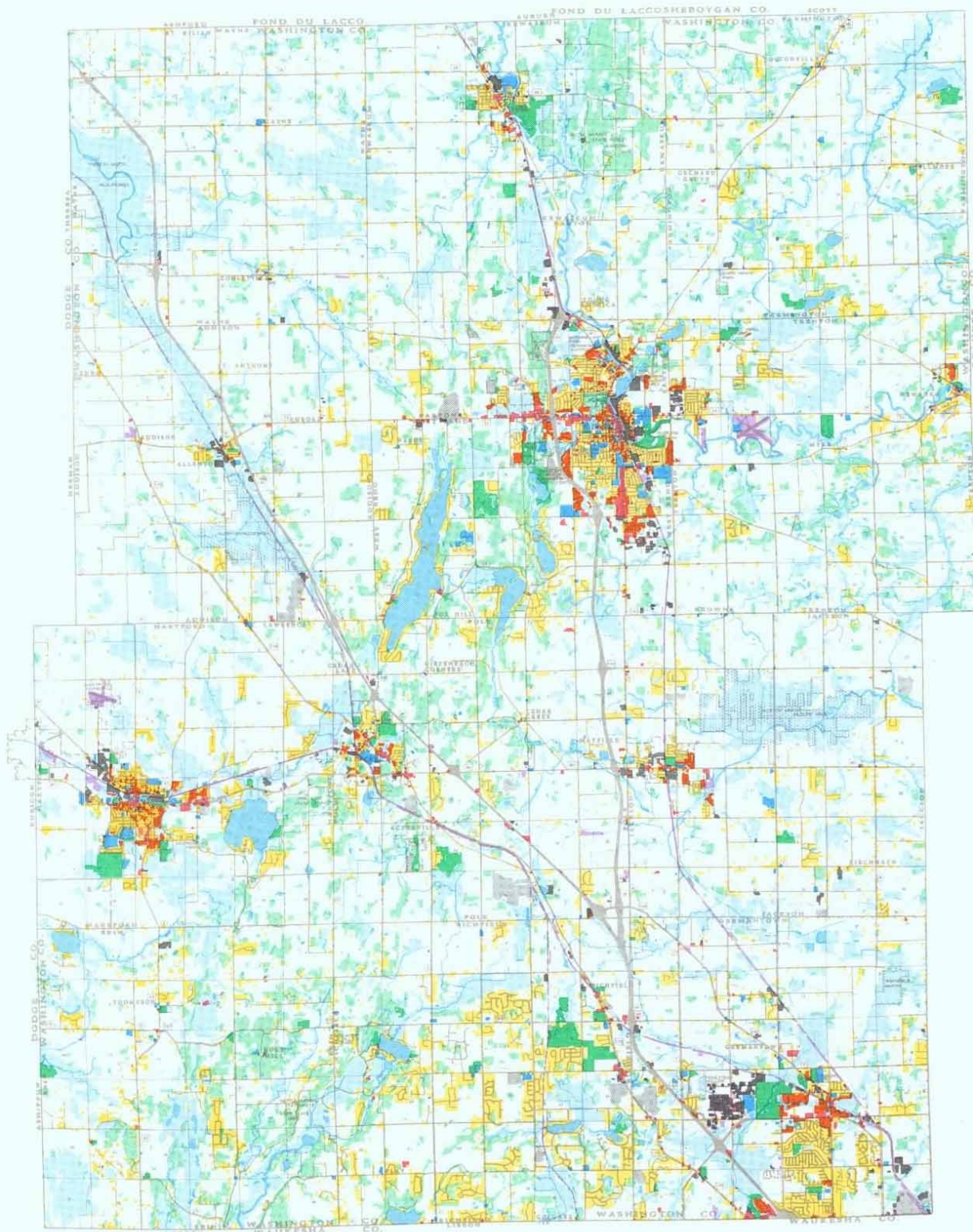
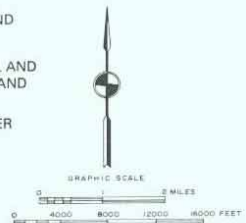


LAND USES IN WASHINGTON COUNTY: 1995



LEGEND

- | | | |
|--|--|--|
|  SINGLE-FAMILY RESIDENTIAL |  GOVERNMENTAL AND INSTITUTIONAL |  EXTRACTIVE AND LANDFILL |
|  MULTI-FAMILY RESIDENTIAL |  RECREATIONAL |  AGRICULTURAL AND OTHER OPEN LAND |
|  RETAIL AND SERVICE |  STREETS AND HIGHWAYS |  SURFACE WATER |
|  MANUFACTURING, WHOLESALE, AND STORAGE |  WETLANDS | |
|  TRANSPORTATION, COMMUNICATION, AND UTILITIES |  WOODLANDS | |



Source: SEWRPC.