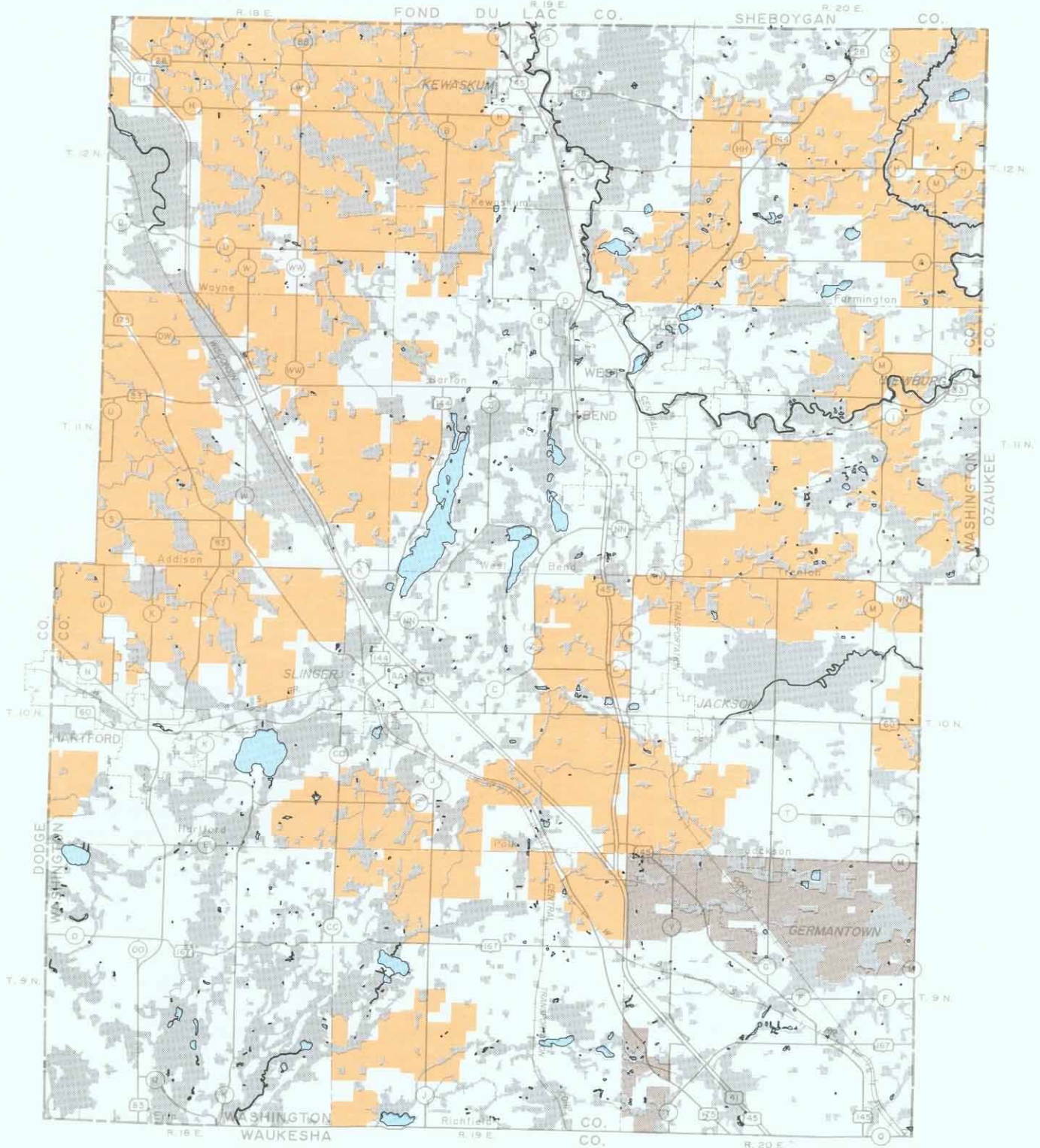


FARMLAND PRESERVATION AREAS UNDER THE WASHINGTON COUNTY PARK AND OPEN SPACE PLAN: 2010



LEGEND

- PRIMARY FARMLANDS AS IDENTIFIED IN THE WASHINGTON COUNTY FARMLAND PRESERVATION PLAN
- RURAL AGRICULTURAL LANDS AS IDENTIFIED IN THE COMPREHENSIVE MASTER PLAN FOR THE VILLAGE OF GERMANTOWN
- PRIMARY ENVIRONMENTAL CORRIDOR, SECONDARY ENVIRONMENTAL CORRIDOR AND ISOLATED NATURAL RESOURCE AREA
- SURFACE WATER



Source: SEWRPC.