

2010 Washington County  
Community Health & Emergency  
Preparedness Survey Results

---

Washington County Health Department



# Objectives

---

- Gather data on health issues residents feel are most problematic in their community.
- Gather data on H1N1 emergency preparedness.
- Gather data on perceptions of the health department.
- Compare data, where possible, to the 2006 and 2008 county health and emergency preparedness surveys.



# Methodology

---

- 10 minute telephone survey of county residents
- 400 completions from August 16, 2010 through September 3, 2010
- Two-fold sampling
  - 1) RDD landline sample of listed & unlisted #s (n=300)
    - Respondents randomly selected using next birthday method
  - 2) Cell phone only sample (n=100)
    - Adult answering the phone designated as the respondent
- All data post-stratified by age and gender of adult residents as of 2000 Census proportions.
- Margin of error: 5%



# Demographics

---



# Respondent Demographics

---

	Percent
Gender	
Male	49%
Female	51%
Household Income	
Bottom 40 Percent Bracket	27%
Middle 20 Percent Bracket	18%
Top 40 Percent Bracket	34%
Not sure/No answer	20%



## Respondent Demographics (cont.)

---

Age	Percent
18 to 34	28%
35 to 44	25%
45 to 54	20%
55 to 64	12%
65 and older	15%



## Respondent Demographics (cont.)

---

	Percent
Education	
High school or less	36%
Some post high school	34%
College graduate	30%
Marital Status	
Married	64%

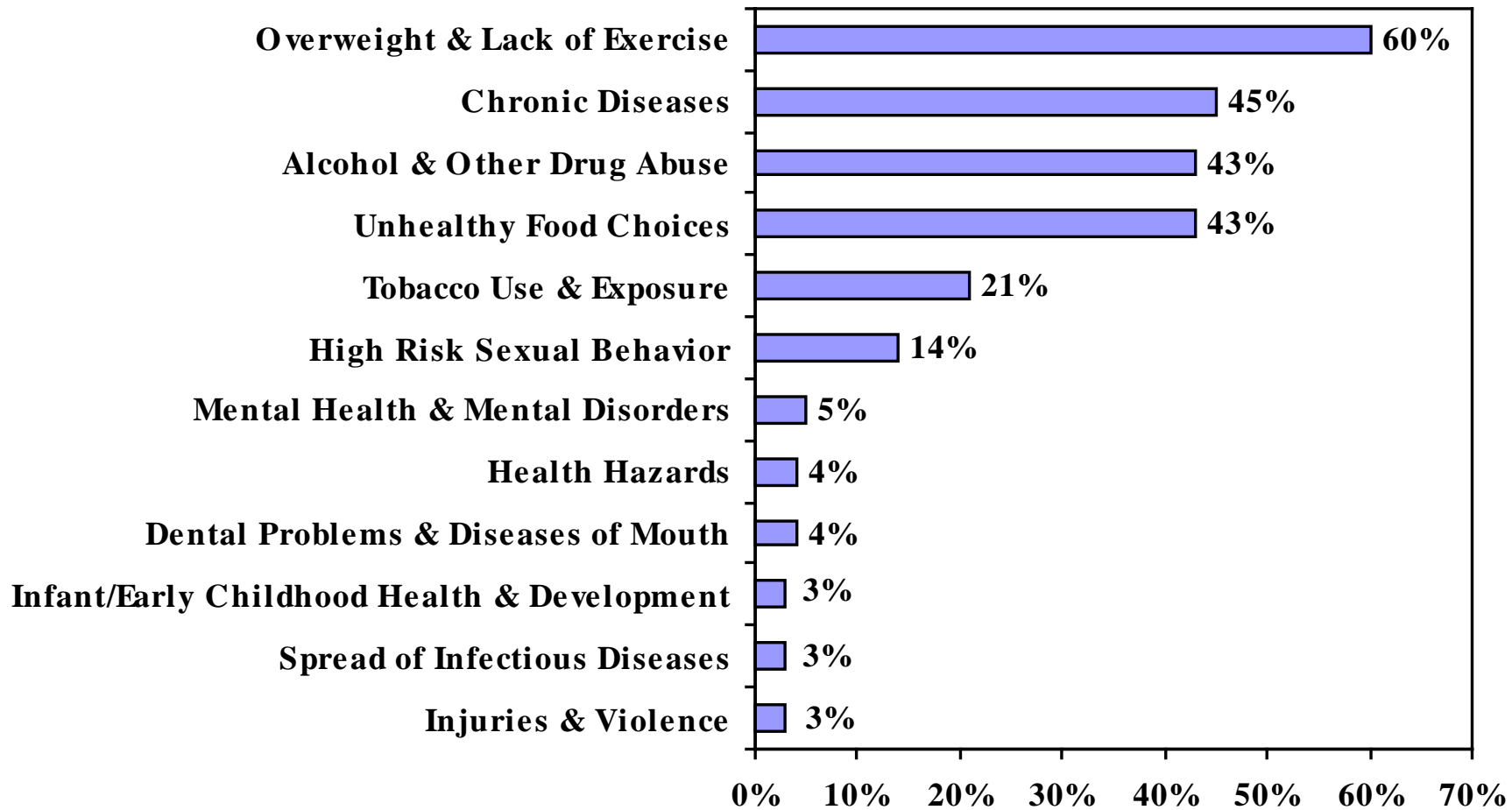


# Community Health

---

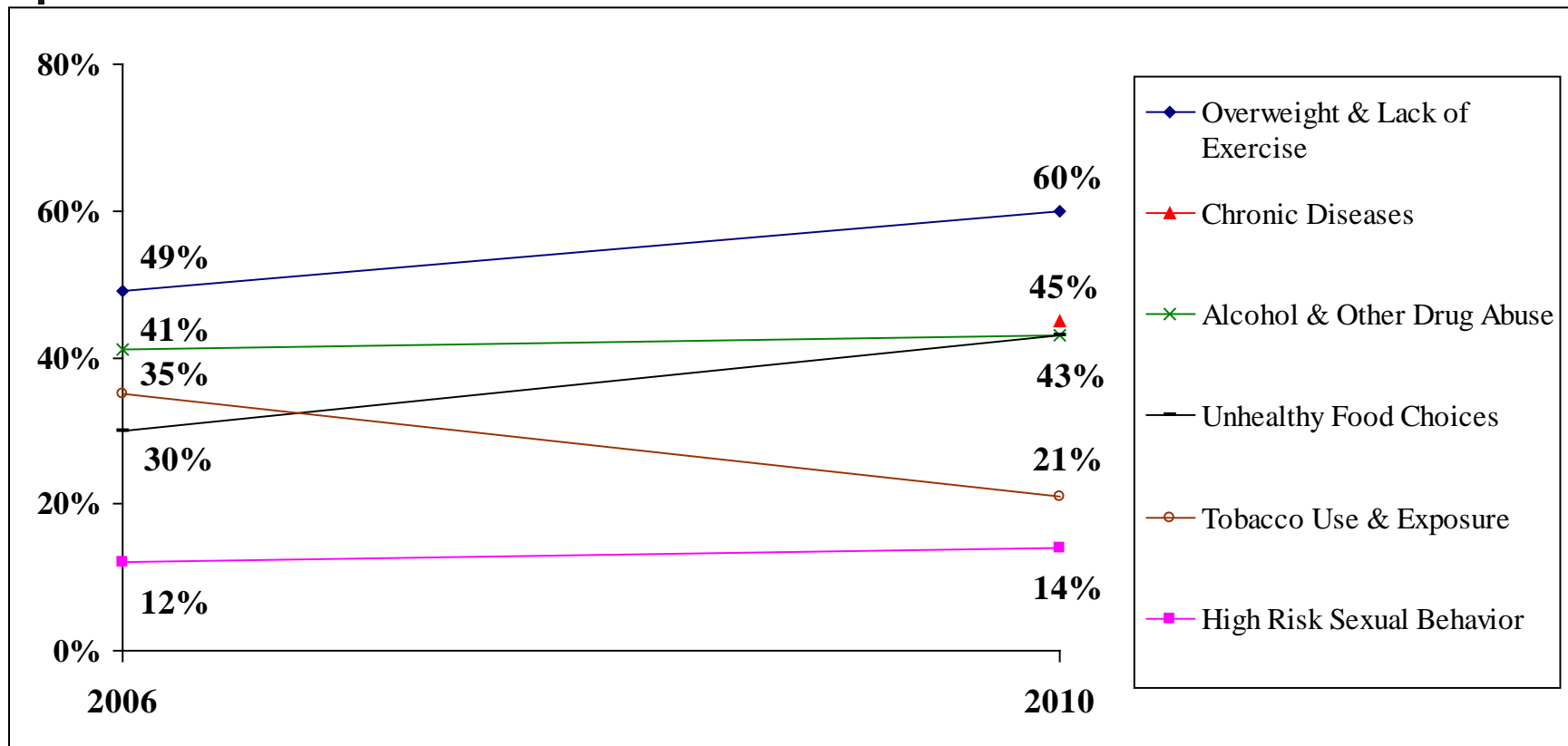


# Top Community Health Problems (2010)



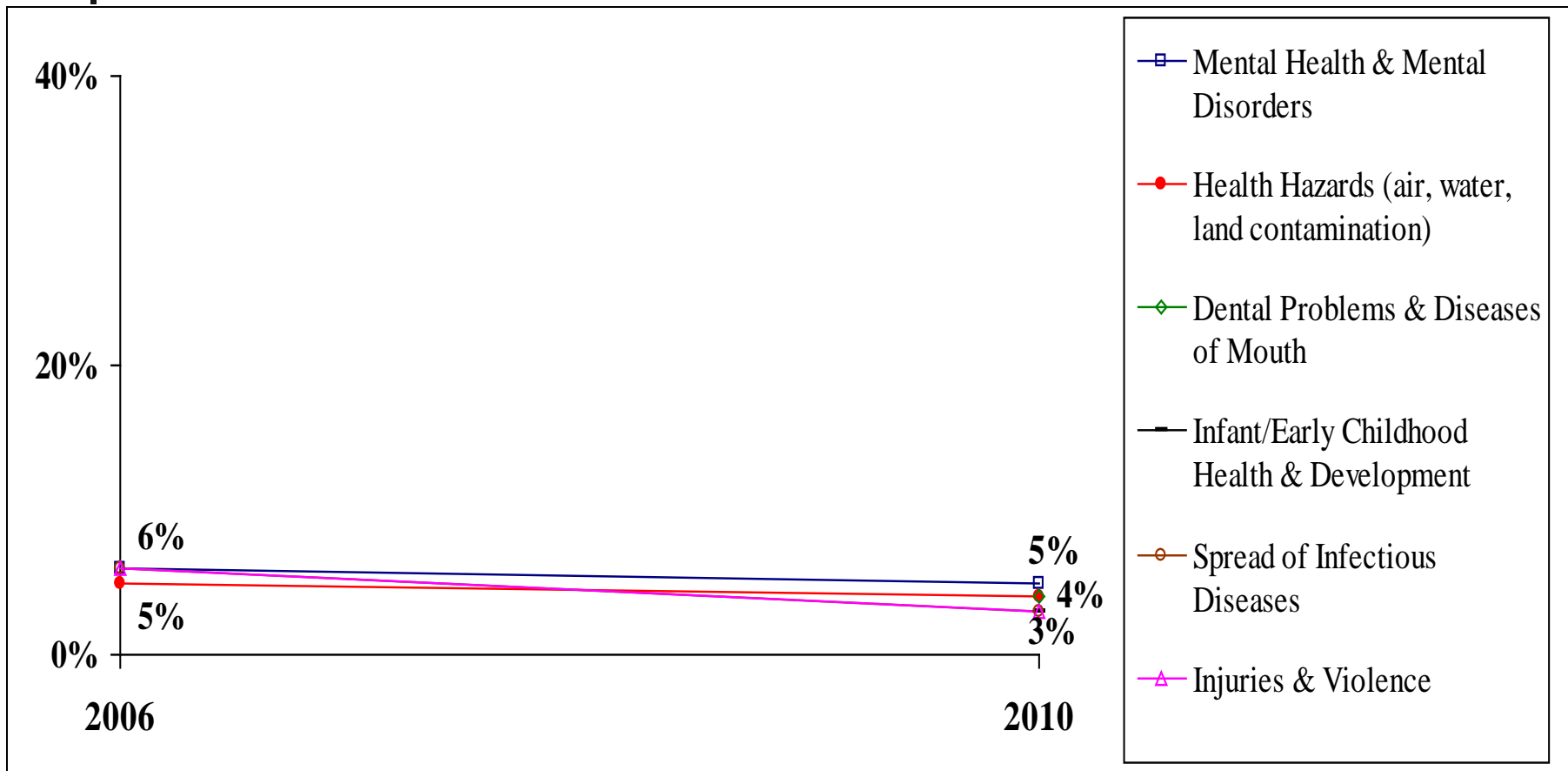
# Top Community Health Problems

## (Page 1 of 2)



# Top Community Health Problems

## (Page 2 of 2)



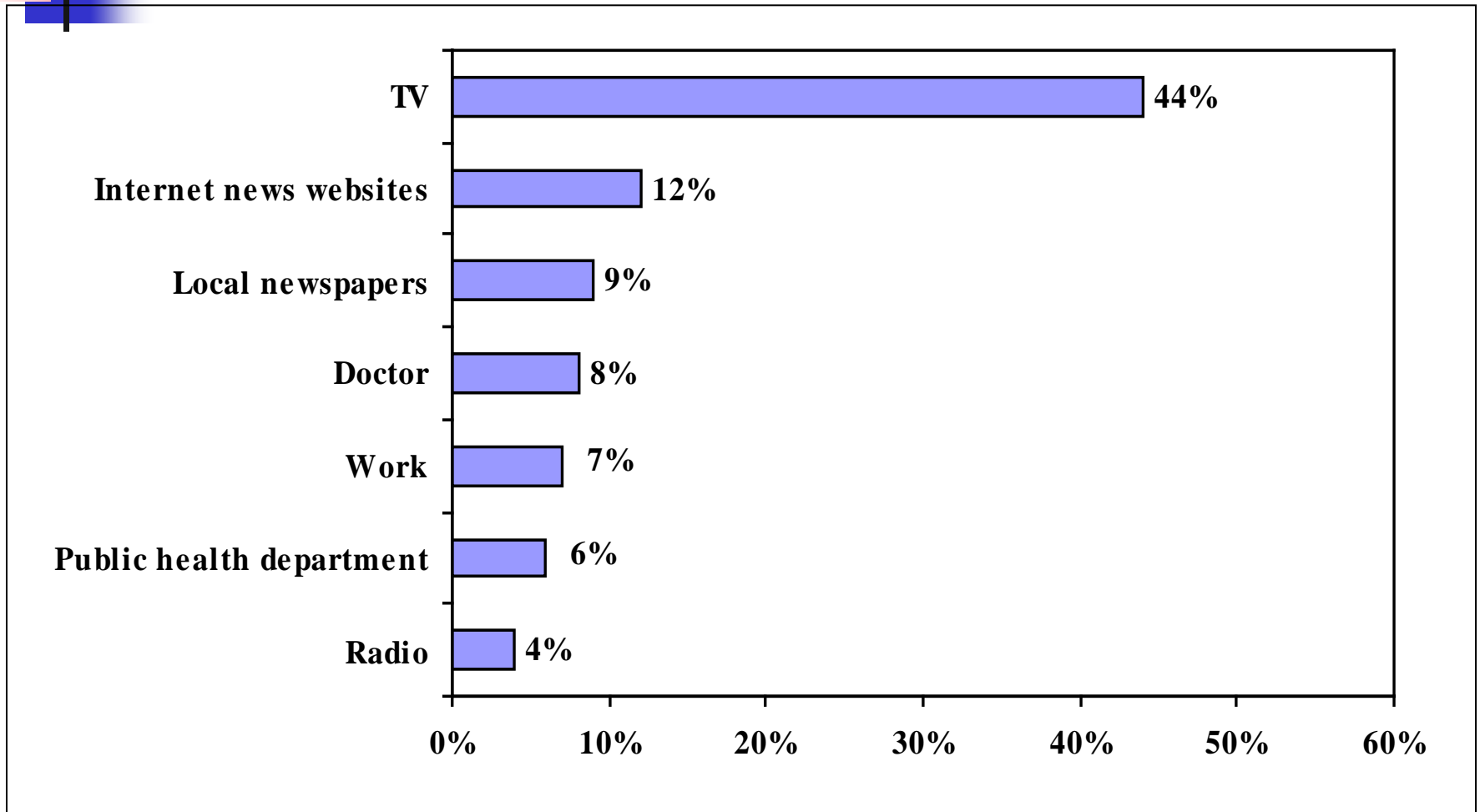
H1N1 Emergency

Planning/Preparedness

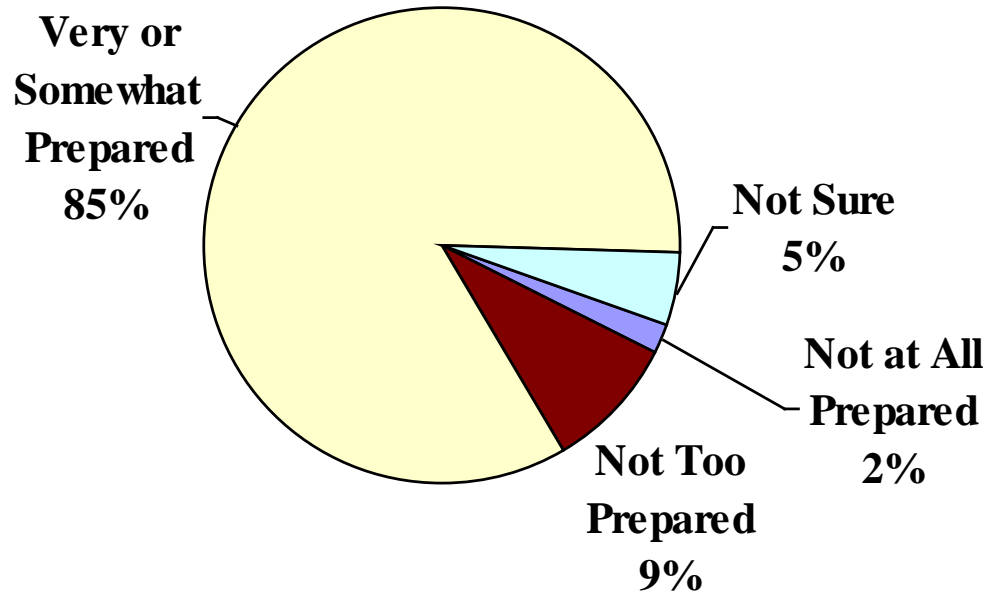


---

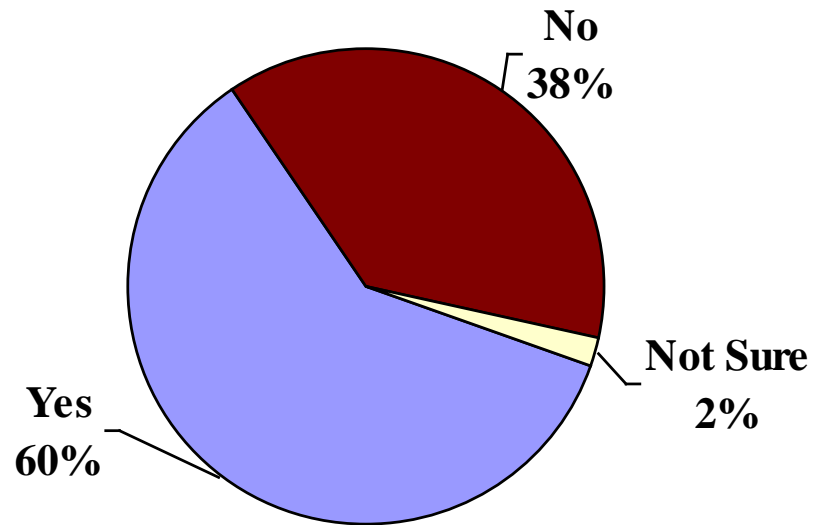
# H1N1 Pandemic Information Source (2010)



# Community Preparedness Against H1N1 Pandemic (2010)



# Followed Recommendations Related to H1N1 (2010)



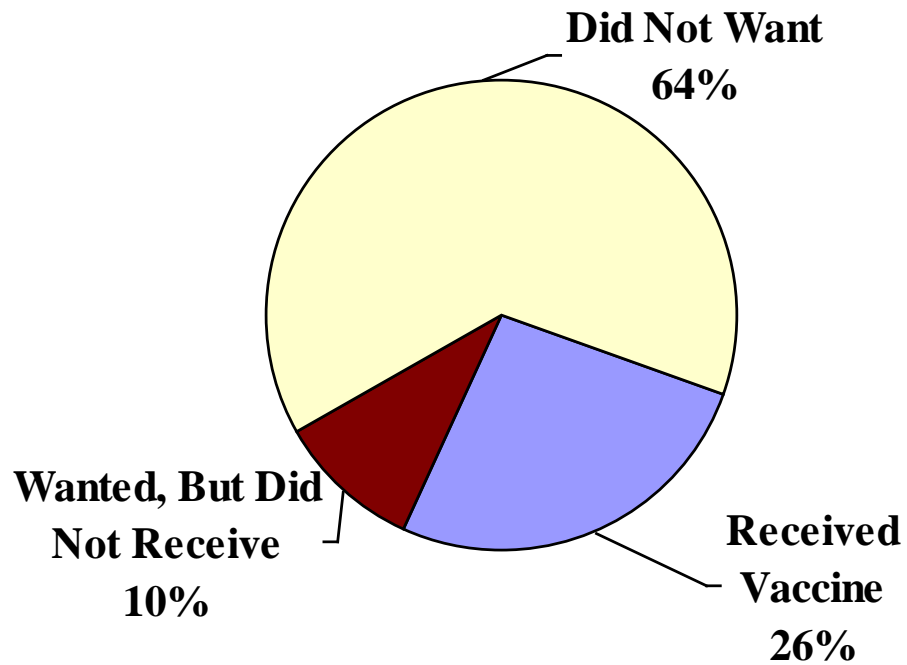


# H1N1 Vaccination

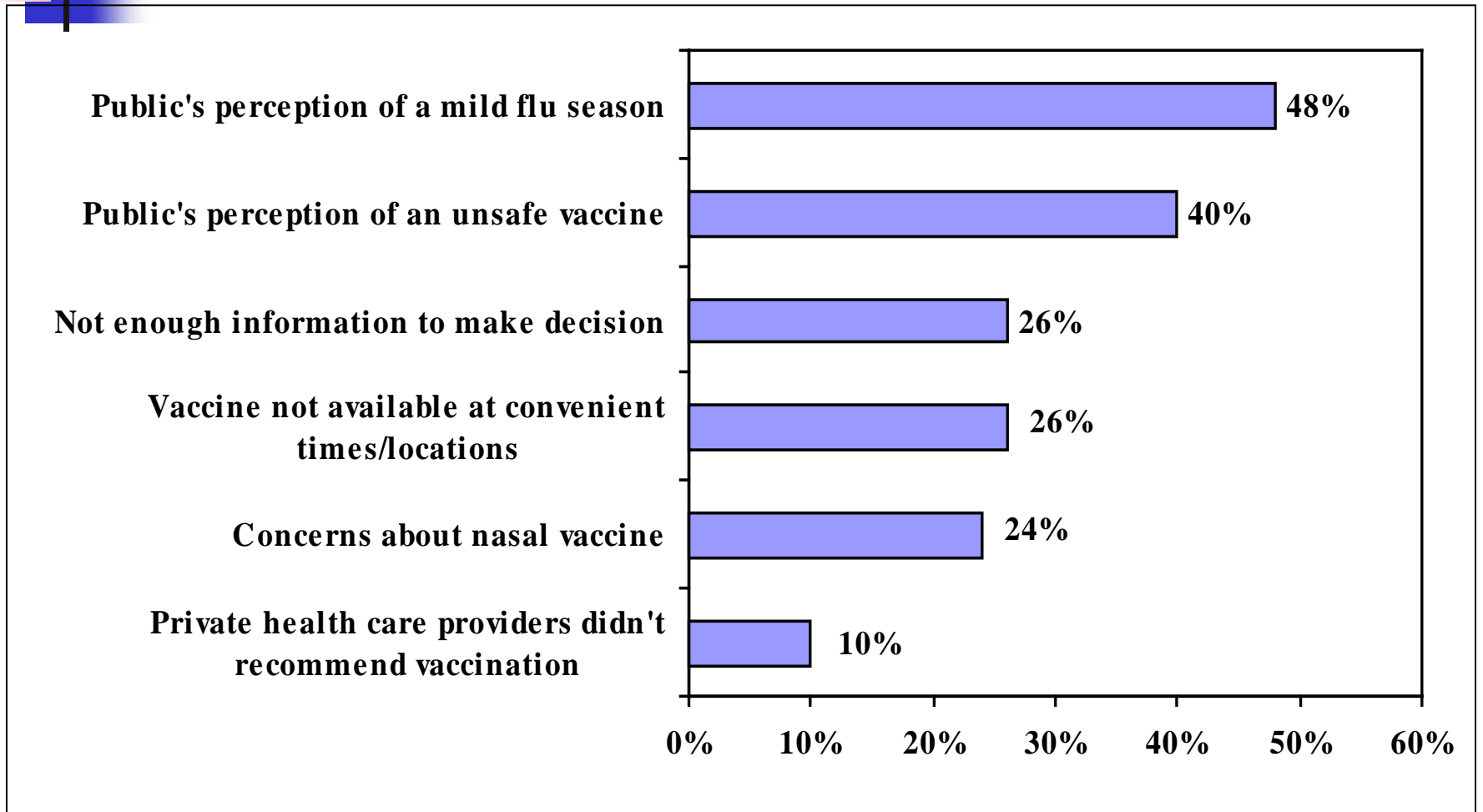
---



# H1N1 Vaccine (2010)



# Possible Reasons Public Did Not Receive H1N1 Vaccine (2010)





# Emergency Volunteer Groups

---

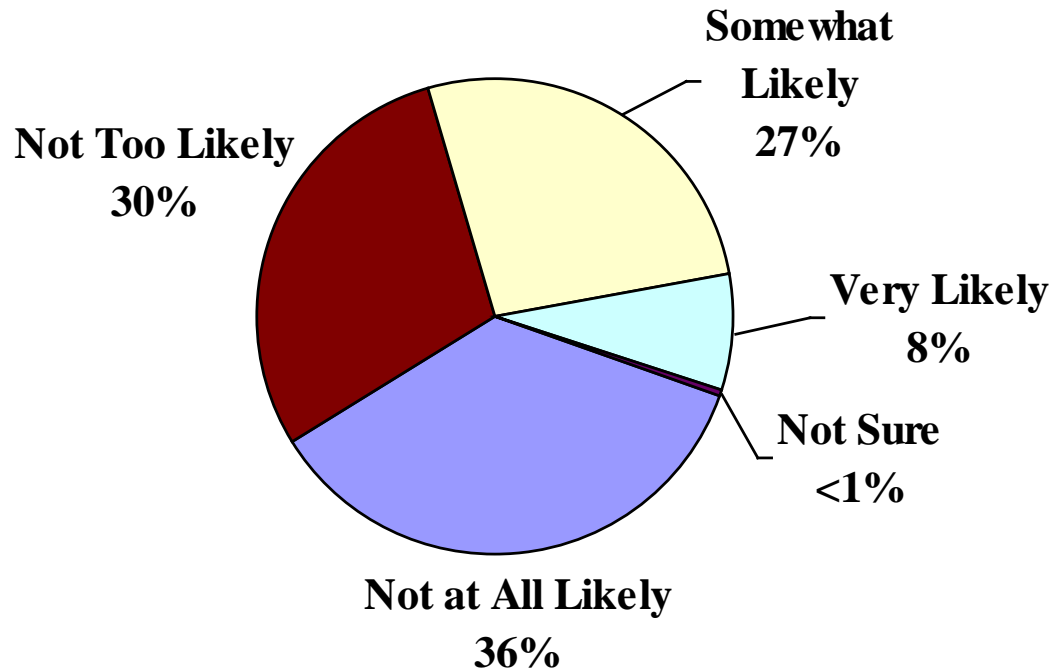


# Volunteering for H1N1 Pandemic (2010)

---

Of All Respondents...	Percent
Knowledge of volunteer groups registering volunteers	21%
Volunteered during H1N1 pandemic at public health clinic	3%

# Likelihood of Registering as Volunteer for Public Health Clinic (2010)

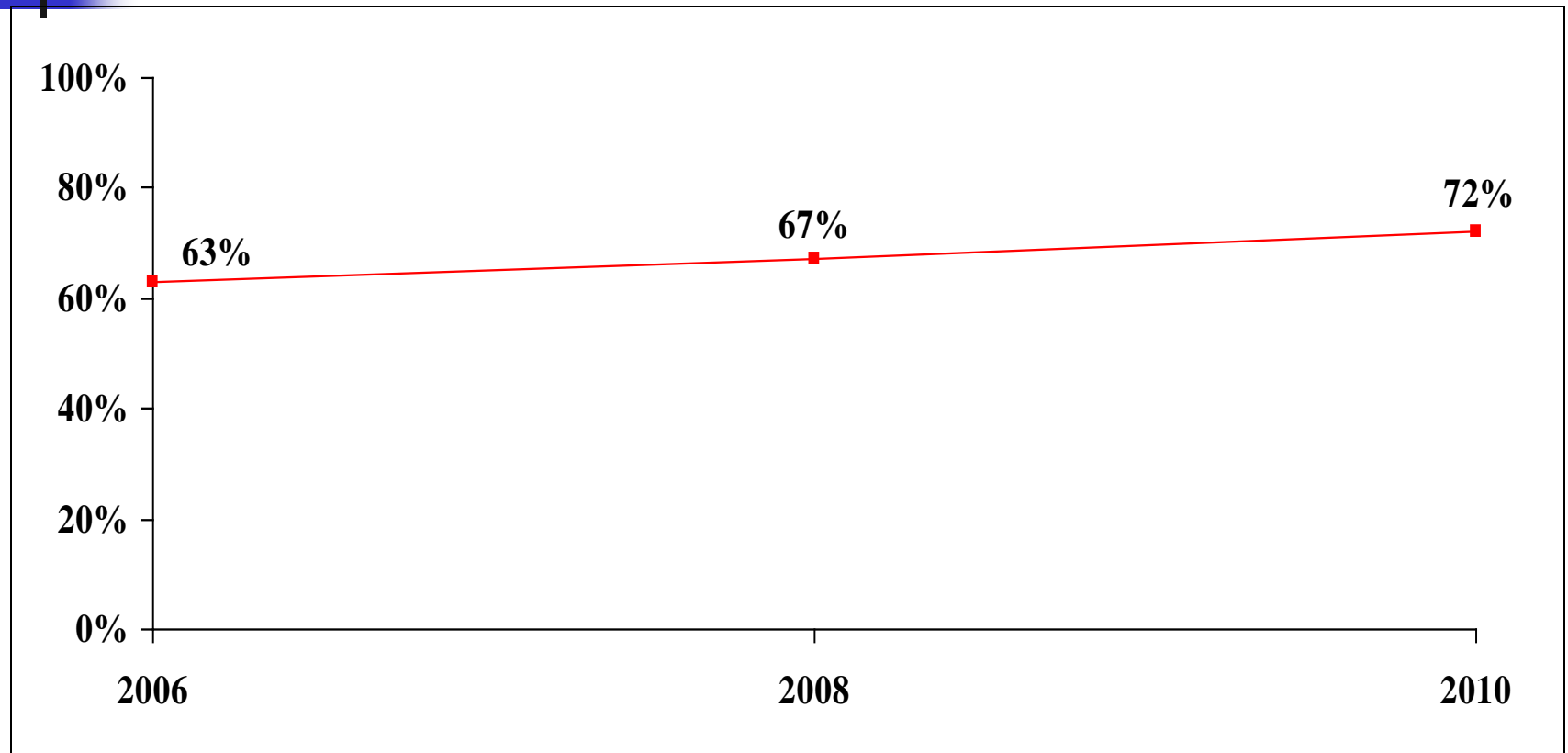




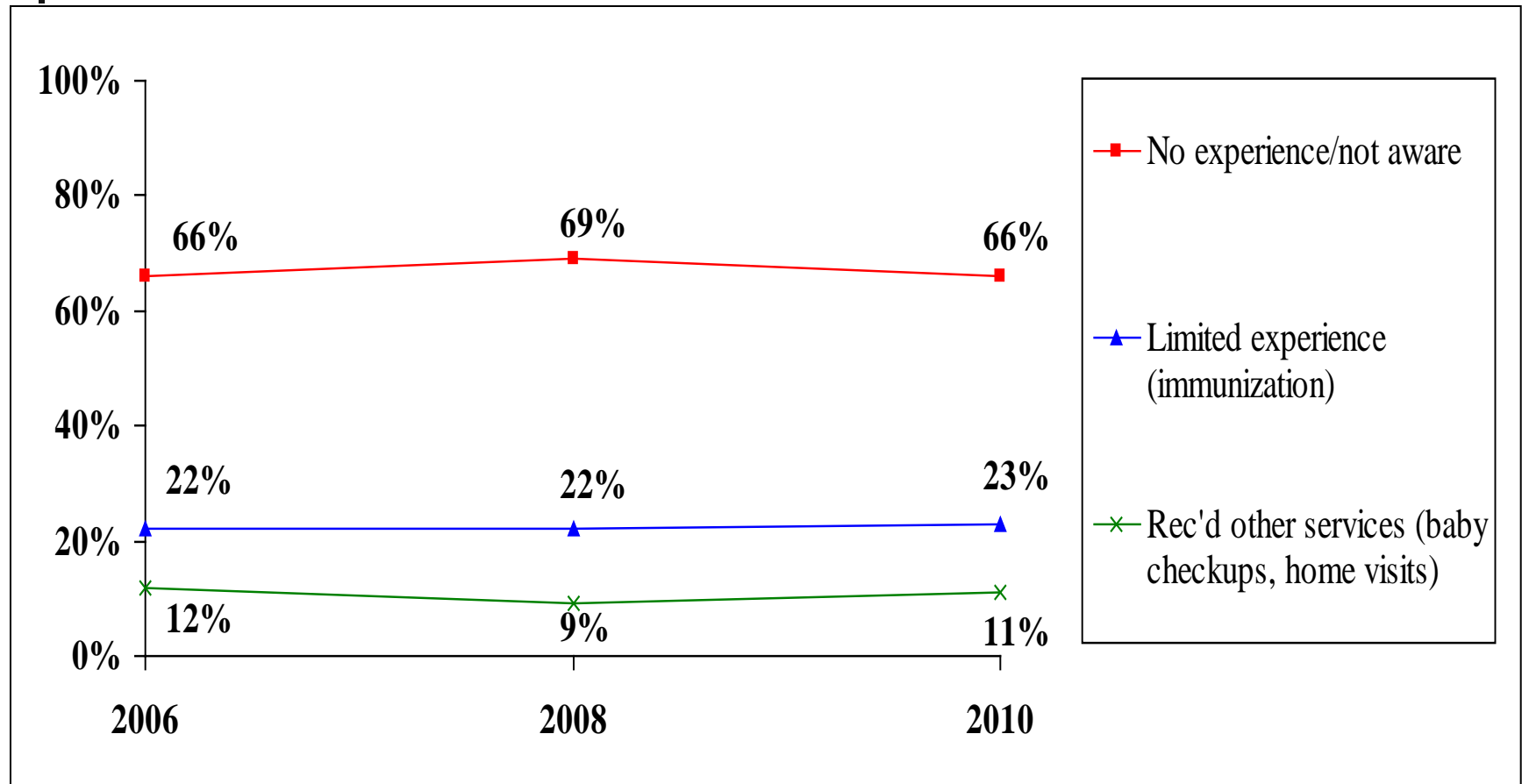
# Health Department

---

# Aware of Health Department

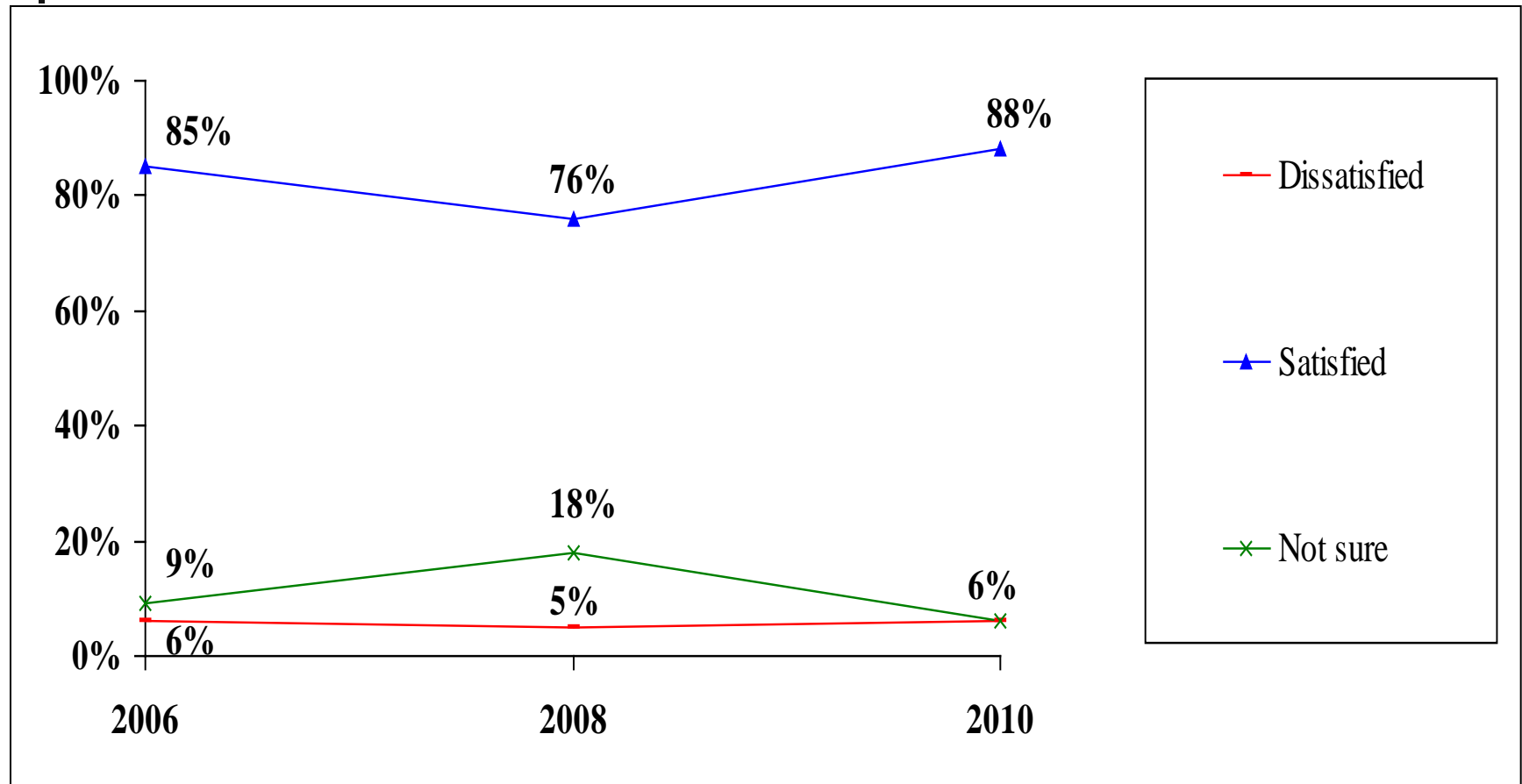


# Experience with Health Department

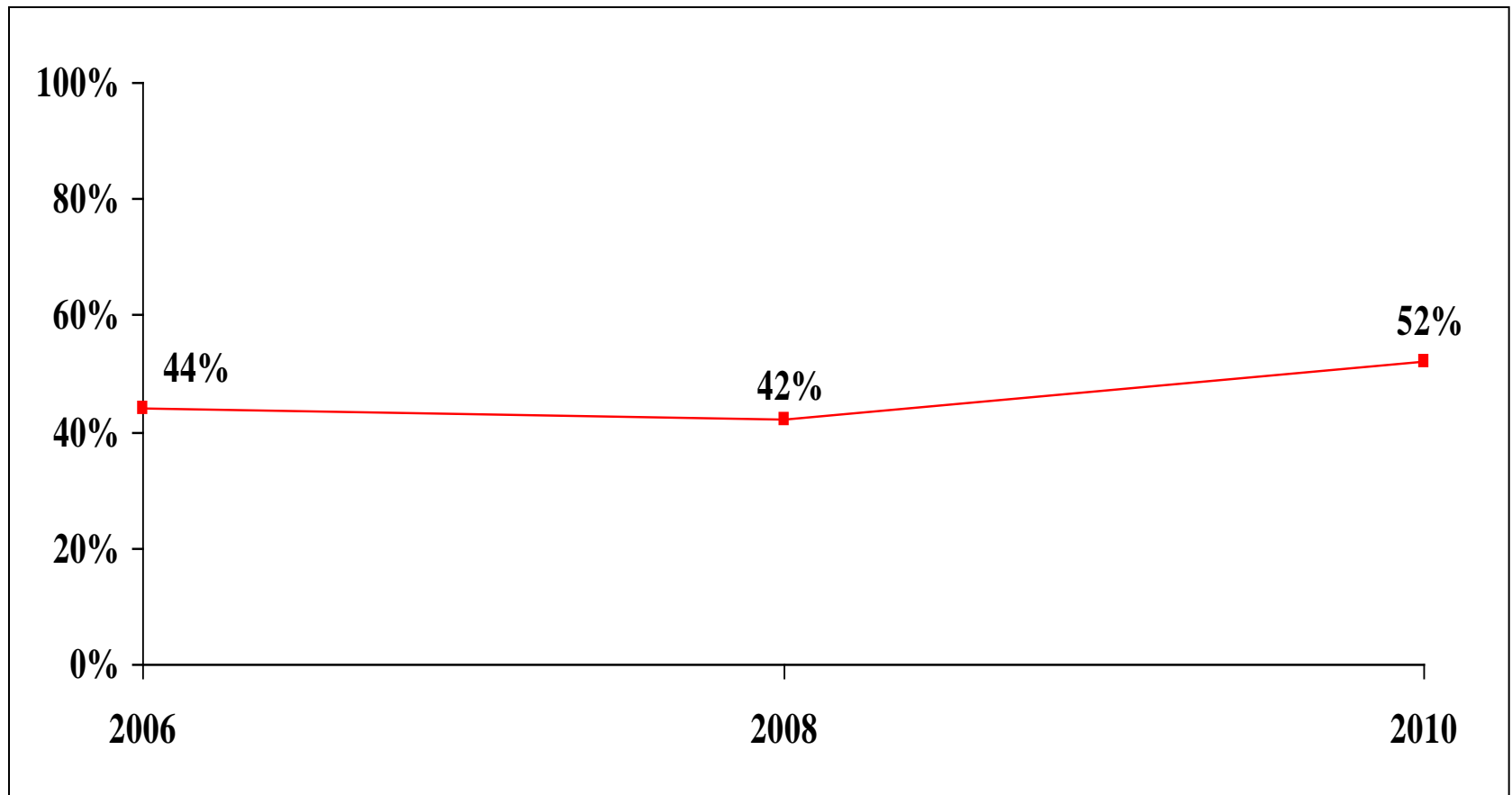




# Satisfaction with Health Department Meeting Its Mission



# Aware of Health Department's Involvement with Emergency Preparedness Planning





# Next Steps

---