



# Washington County Health Department

[www.co.washington.wi.us/chn](http://www.co.washington.wi.us/chn)

333 E. Washington Street  
Suite 1100, P.O. Box 2003  
West Bend, WI 53095-2003  
Phone (262) 335-4462  
Fax (262) 335-4463

## 2009 Annual Report presented to the County Board May 2010

### Health Department Mission

Promote Health ♦ Prevent Disease ♦ Protect the Public

### Director's Message

from Linda Walter, Director/Health Officer

This report of the Health Department's activities during 2009 is presented in compliance with Wisconsin Administrative Rule HFS 140.04(3) (a). I wish to thank the Board of Health for assuring that the core functions of public health are met. The department's *2006-2010 Strategic Plan* and *2006-2010 Community Health Improvement Plan* (CHIP) continue to guide the Board in policy development. The Health Department strives to fulfill its mission and the County's expectation of providing all citizens with high quality, prompt and cost-effective services. As the Director of the Health Department and the county's Health Officer I am proud of the services offered and the employees who provide them.

The *2006–2010 CHIP* is the third community assessment done since 1994 and identifies priority areas that impact the general well being of all citizens. The plan identifies priority areas that include, but are not limited to: (1) **obesity**: nutrition & physical activity, (2) **addictions**: tobacco, alcohol & other drugs and (3) **emergency preparedness**: proactive measures. The plan and supporting documentation are available by going to the county website [www.co.washington.wi.us](http://www.co.washington.wi.us), clicking on the department tab for the Health Department and scrolling down the page to the documents/brochures section. Many partners, coalitions, other county departments and the Health Department work towards meeting the needs identified in the CHIP.

The Health Department successfully completed its third five-year review by the Wisconsin Department of Health Services Division of Public Health during 2009 demonstrating its compliance with state public health statutes.

Public health departments historically have adapted to the evolving needs of the communities they serve. The services delivered each year reside within five areas mandated by Wisconsin statutes for all health departments. Many important functions that protect the public's health occur behind the scenes. This year the worldwide H1N1 influenza pandemic became a priority in April and continued to consume many resources through the end of the year. The Health Department adapted to its changing environment and met the challenge of the pandemic to protect citizens, thanks in part to several factors, including, but not limited to:

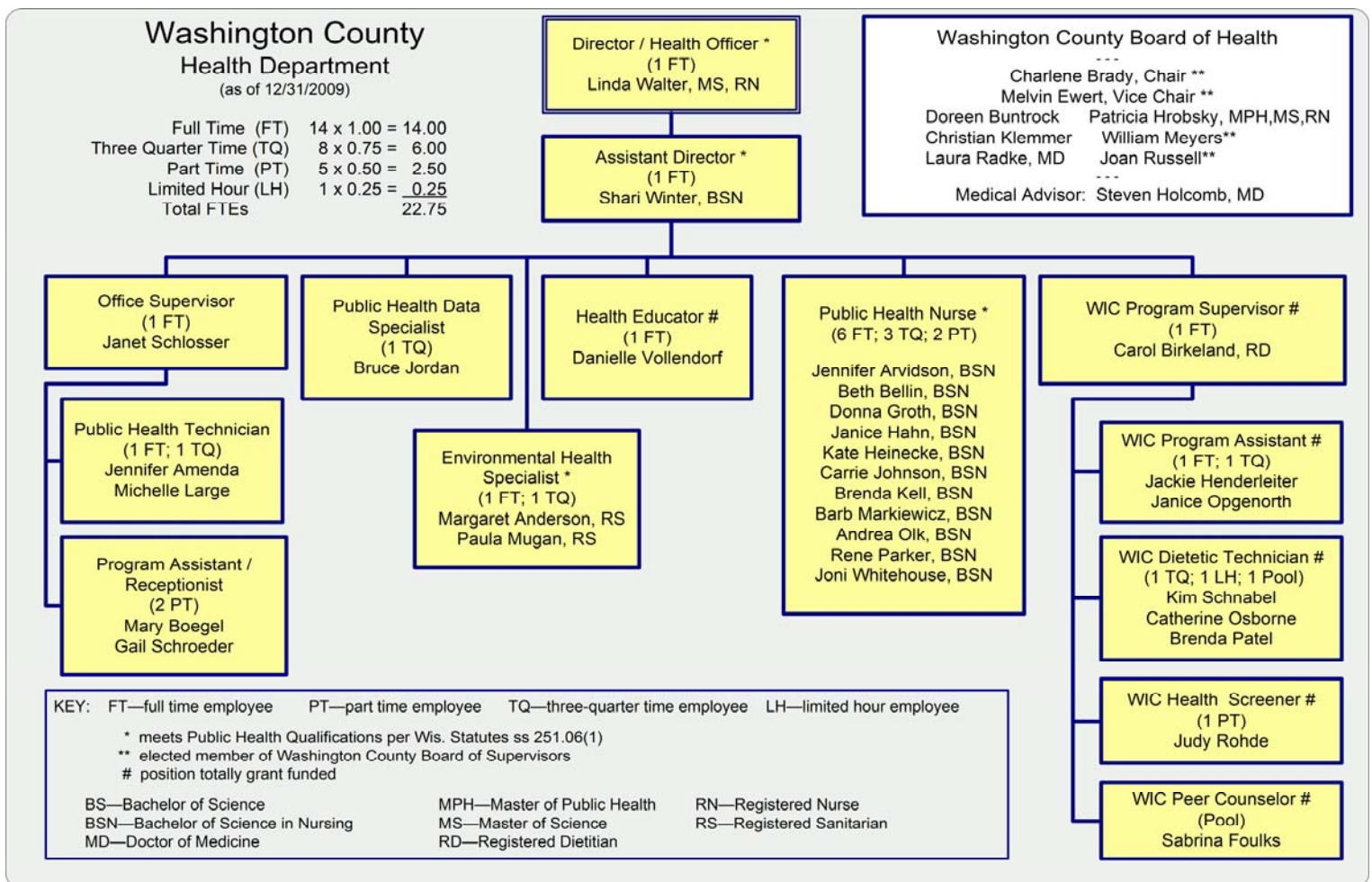
- ♦ Cross-training of employees in multiple areas
- ♦ Continued acceptance and use of available technology
- ♦ Previous ICS/NIMS training and exercising that resulted in a high level of readiness and response capacity
- ♦ Established partnerships with community agencies and other county departments
- ♦ Volunteers and citizens who cooperated with the H1N1 campaign

**D**o what you can  
with what you  
have, where you are.

Theodore Roosevelt

The Health Department appreciates the support of its stakeholders and looks forward to continuing to deliver essential services to the community and individual citizens.

**Public Health makes a difference to the citizens of Washington County.**



## Focus Areas of Public Health

The remaining pages of the report are color coded to the focus area being highlighted

### ◆ Communicable Disease Control and Surveillance

- ◆ Communicable disease follow-up including
  - New, emerging, and re-emerging diseases
  - STD and hepatitis counseling services
- ◆ Immunization services/coalition
- ◆ Tuberculosis testing/case management/dispensary
- ◆ Disaster preparedness activities/coalition

### ◆ Environmental Health (Human Health Hazard Control)

- ◆ Radon information center/screenings
- ◆ Human health hazard and nuisance investigation
  - Lead screening and risk assessments
  - Beach water testing
- ◆ Rabies control coordination
- ◆ Water testing for selected wells—DNR contract
- ◆ Licensed facility inspections for selected establishments—DPH contract

### ◆ Disease and Injury Prevention

- ◆ Wisconsin Well Woman services/coalition
- ◆ Tobacco Control services/coalition
- ◆ Physical Activity & Nutrition/coalition
- ◆ Injury Prevention services/coalition
  - Car seat safety check site

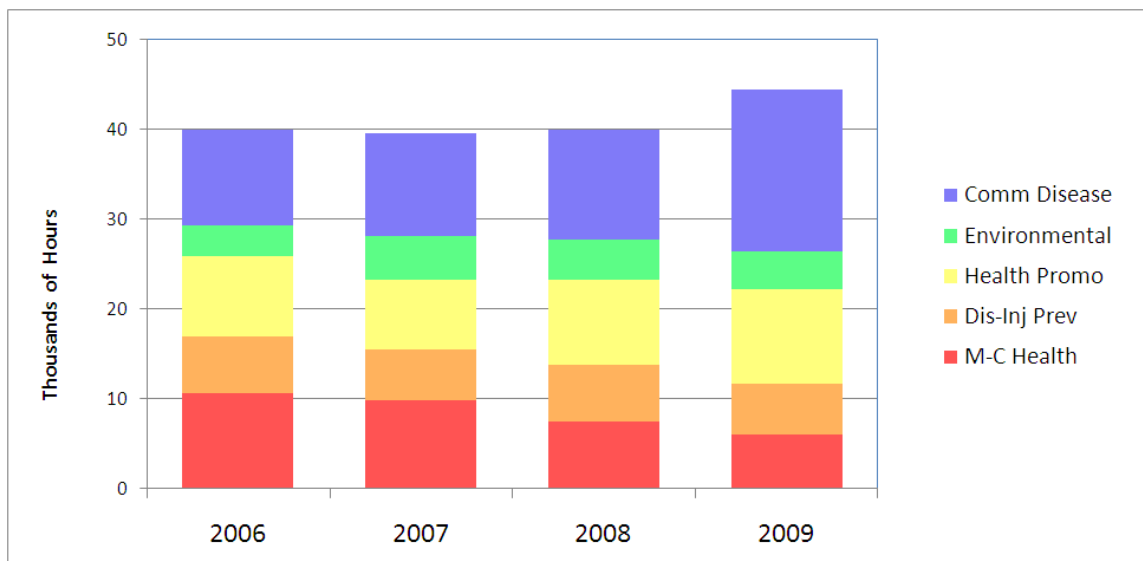
### ◆ Health Promotion

- ◆ Women, Infants and Children (WIC) program
- ◆ Information dissemination
  - Website, brochures, media, displays

### ◆ Generalized Public Health Nursing

- ◆ Community Health Improvement Process
- ◆ Maternal/newborn health services including
  - Prenatal/postpartum
    - Teaching and education
    - Case management services
    - Referral to community resources
  - Pregnancy testing

## Health Department Time Allocation By Focus Area



## Performance Management Highlights

**Table 1 Data on Selected Outputs**

		2005	2006	2007	2008	2009
1	Communicable Disease Investigations	497	554	555	519	996
2	Value of free vaccines distributed locally	\$45,533	\$70,263	\$93,681	\$199,500	\$154,663^^
3	# of children followed with elevated blood lead levels	16	15	16	11	8
4	% of blood lead screenings provided by Health Dept of the total done annually in the county by all health care providers	18% 130/728	15% 100/669	12% 102/844	12% 125/1024	15% 161/1090
5	Preparedness hours logged by Health Department annually	1,412	2,695	2,204	1,835	2,552 + 4,788 H1N1
6	WIC vouchers redeemed in county	\$677,222	\$693,331	\$963,953	\$1,136,521	\$1,116,954
7	Average monthly WIC caseload: individuals/families	1251	1231/768	1348/827	1471/897	1555/955
8	Local county per capita tax levy vs. average all local health departments' per capita tax levy	\$7.40 \$12.19	\$7.88 \$13.20	\$7.82 \$13.30	\$8.30 #	\$8.01 #
9	Local health department total staff FTEs per 10,000 population vs. average total FTEs all health departments in state	1.6 3.2	1.6 3.2	1.6 3.3	1.6 #	1.7 #

**Table 2 Data on Selected Outcomes**

10	% of age appropriate immunizations for 24 month olds (Changed from measuring HD caseload to jurisdictional in 2008)	86%	89%	83%	86% agency 70% county	69% countywide
11	% of Health Dept. clients beginning pregnancy care during the 1st trimester	66% 81/122	59% 84/142	68% 110/164	66% 88/133	51% 50/98
12	% of county births for which Health Dept. completed a prenatal or postpartum assessment	17% 251/1498	18% 241/1345	22% 330/1512	19% 290/1504	16% 242/1534
13	% of enrolled WI Well Woman Program clients who are aged 50-64 years	51% 59/115	63% 87/138	68% 110/162	63% 99/156	64% 92/143
14	County's ranking and the (quartile) for health outcomes from annual state report	10th 1st quartile	7th 1st quartile	8th 1st quartile	6th 1st quartile	3rd ** 1st quartile
15	County's ranking and the (quartile) for health determinants or factors from annual state report	3rd 1st quartile	3rd 1st quartile	4th 1st quartile	3rd 1st quartile	5th ** 1st quartile

\*\*changed to standard national metrics & formula for 72 WI counties

# State data not published yet

^^Does not include H1N1 vaccine

# Confirmed and Probable Communicable Disease Cases

Washington County													* 2009 Population 131,066			
Disease Name	Jan	Feb	Mar	Apr	May	Jun	Jul	Aug	Sep	Oct	Nov	Dec	Cases	Rate *	Rate*	Rate*
<b>Category I</b>																
Food borne or waterborne outbreaks	1												1	0.8	0.0	0.0
Hepatitis A													0	0.0	0.8	0.8
Meningococcal disease													0	0.0	0.8	0.0
Pertussis		1	1	8	7		1	1	1	2			22	16.8	3.8	13.1
Tuberculosis	1							1					2	1.5	0.0	3.1
Vancomycin Intermed. S.Aureaus (VISA)								1					1	0.8	0.0	0.0
<b>Total Category I</b>	<b>2</b>	<b>1</b>	<b>1</b>	<b>8</b>	<b>7</b>		<b>1</b>	<b>3</b>	<b>1</b>	<b>2</b>			<b>26</b>	<b>19.8</b>	<b>5.4</b>	<b>17.0</b>
<b>Category II</b>																
Blastomycosis					1								1	0.8	0.8	0.8
Campylobacter		3	1	5	1	2	5	3	4	1	2	1	28	21.4	22.2	29.4
Cryptosporidiosis						1	1	2	1	1	2	1	9	6.9	13.0	14.7
<i>E. coli</i>	1			1			1	1		1			5	3.8	5.4	6.2
Ehrlichiosis													0	0.0	0.0	0.8
Giardiasis		1	1	1		2	1	1		1	2	2	12	9.2	6.9	10.8
Hemolytic uremic syndrome				1						1			2	1.5	0.0	0.0
Hepatitis B	1	1	1		1			1	2	1	1		9	6.9	6.1	4.6
Hepatitis C	3	4	3	2	1	2	2		6	3	2	3	31	23.7	13.0	16.2
Histoplasmosis									1				1	0.8	8	0.0
Influenza, Novel A (H1N1)					5	66	5	2	1	174	95	2	350	267.0	0.0	0.0
Kawasaki disease													0	0.0	1.5	0.0
Legionellosis									1				1	0.0	0.0	0.8
Lyme Disease		1					6	5	8		3		23	17.5	5.4	3.9
Malaria													0	0.0	0.0	1.5
Meningitis, bacterial													0	0.0	0.0	0.8
Meningitis, viral													0	0.0	0.0	1.5
Mumps													0	0.0	0.8	0.0
Mycobacterial disease (nontuberculosis)		4			1	1	3	3	2	2	1		17	13.0	13.8	17.8
Salmonellosis	1	1	1	2	5	3		1	4	1	2		21	16.0	14.6	16.2
Shigellosis	4	3											7	5.3	6.1	7.7
STI: <i>Chlamydia trachomatis</i>	13	15	13	5	8	9	13	12	14	10	12	6	130	99.2	102.7	82.0
STI: Gonorrhea	1	2	2	4					2	2	1		14	10.7	16.9	13.9
<i>Streptococcus</i> group A invasive disease						1	1						2	1.5	1.5	0.8
<i>Streptococcus</i> group B invasive disease					2	1		1	2		2		8	6.1	4.6	0.0
<i>Streptococcus pneumoniae</i> invasive	2			1			1					1	5	3.8	8.4	0.8
Varicella	1	2	2		2	1			2	1			11	8.4	29.9	34.0
Yersiniosis						1							1	0.8	0.0	0.0
<b>Total Category II</b>	<b>27</b>	<b>37</b>	<b>24</b>	<b>22</b>	<b>27</b>	<b>90</b>	<b>39</b>	<b>32</b>	<b>50</b>	<b>199</b>	<b>125</b>	<b>16</b>	<b>688</b>	<b>524.9</b>	<b>283.5</b>	<b>307.0</b>
<b>Category III</b>																
AIDS									2				2	1.5	1.5	0.8
HIV							1				1		2	1.5	3.8	3.1
<b>Total Category III</b>							<b>1</b>		<b>2</b>		<b>1</b>		<b>4</b>	<b>3.1</b>	<b>5.4</b>	<b>3.9</b>
<b>Total Reportable</b>	<b>29</b>	<b>38</b>	<b>25</b>	<b>30</b>	<b>34</b>	<b>90</b>	<b>41</b>	<b>35</b>	<b>53</b>	<b>201</b>	<b>126</b>	<b>16</b>	<b>718</b>	<b>547.8</b>	<b>294.3</b>	<b>327.9</b>

These data are provisional, are subject to correction, and may not correspond with WI DPH reporting criteria.

\* Population estimate is as of 1/1/2009 from WI Dept of Administration ([http://www.doa.state.wi.us/docs\\_view2.asp?docid=3597](http://www.doa.state.wi.us/docs_view2.asp?docid=3597)). Rates are per 100,000 population.

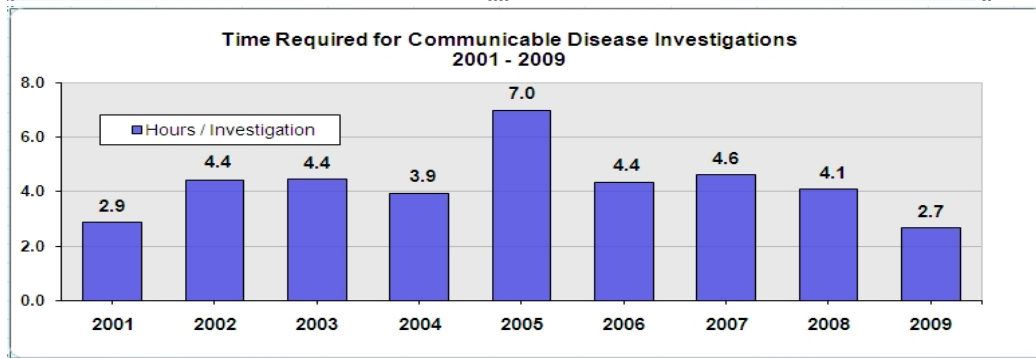
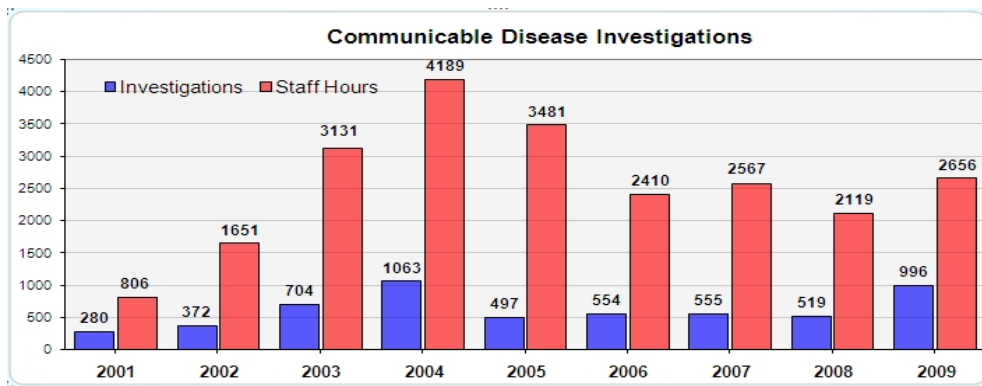
## Strategic Plan Long Term Goal:

### **The public's health will be protected from preventable communicable diseases**

#### Highlights:

#### ◆ Communicable disease (CD) surveillance, investigation, control and prevention

- The number of investigations and staff hours in the graph reflect case management of H1N1 disease, but do not reflect preparation, planning or administration time for the H1N1 vaccine campaign
- During 2009, 11,463 individuals received a total of 15,379 vaccines from the Health Department: up 270% and 460% respectively from 2008, both reflecting the fall 2009 H1N1 vaccine campaign
- TB skin test screenings decreased from 342 to 308 from 2008 due in part to prioritized services in the fall during the H1N1 vaccine campaign
- The year to year fluctuation in employee hours needed for communicable disease control and surveillance demonstrates the importance of having cross-trained employees who can provide the needed surge capacity when unanticipated events such as Pertussis and H1N1 outbreaks occur



## H1N1 Pandemic Influenza Response from April through December 2009

#### Highlights:

- ◆ The Health Department (HD) administered 10,376 doses of H1N1 vaccine and facilitated the transfer of several hundred more doses to private providers from October to December 2009
- ◆ In the last quarter of the year, 30 H1N1 clinics were held with the 4 largest at Fair Park Pavilion
- ◆ A total of 4,788 hours of HD employee time and over 1,200 hours of volunteer time were spent on the pandemic including disease investigations, community education and vaccine administration
- ◆ 80 volunteers managed through the Volunteer Center and 35 EMTs/Paramedics assisted the HD
- ◆ Ongoing partnerships and collaborations facilitated readiness and response activities
- ◆ Some Health Department services were prioritized and delayed during the last quarter of 2009
- ◆ Communication between public and private partners, the state and the media were critical to an effective and coordinated response. The Health Department coordinated communications through the print media, the county and departmental websites, radio, community and agency newsletters, blast faxes, emails, the Washington County Health Care Partners group, EMS providers, WC Emergency Management, WC Volunteer Center and Citizens Corps, webcasts with the state DPH, the 211 information line, fliers, posters, school communications and other community networking.

Strategic Plan Long Term Goal:

***The public's health is protected and promoted through prevention information and activities with respect to the leading causes of death: heart disease, cancer, stroke, and injury***

Highlights:

- ◆ **Wisconsin Well Women Program (WWWP)**
  - ◆ Provides income eligible women with cancer screenings and access to medical care
  - ◆ Total clients enrolled remained stable between 2007 and 2008 at 162 and 156 respectively but decreased slightly in 2009 to 143 women
  - ◆ Total re-enrollments decreased by 10% from 77 in 2008 to 69 in 2009
- ◆ **Injury Prevention Efforts**
  - ◆ The Health Department and the Washington County Injury Prevention Coalition participated in the Celebrate Families event, Fire Prevention Week, Walk Your Child to School, Kid Fest at Boys & Girls Club and Law Enforcement Family Bike Jam as well as holding the annual alcohol related mock traffic crash for students which was held at West Bend High Schools in 2009
  - ◆ Education, demonstration and assistance in installing infant and child car seats decreased 16 % (247 to 208) from 2008 to 2009 due in part to prioritization of services during the H1N1 campaign
- ◆ **Tobacco Surveillance and Control (CHIP Addictions Priority)**
  - ◆ The Washington County Tobacco Free Coalition hosted a “Women of Influence” event with the North Shore Tobacco Free Coalition and Ozaukee County Public Health Department in support of the statewide smoke-free air policy initiative with over 100 participants attending
  - ◆ Washington County Tobacco Free Coalition also sponsored a legislative breakfast with the same partners above and had four legislators attend
- ◆ **Obesity: Physical Activity and Nutrition (CHIP Obesity Priority)**
  - ◆ The Healthy People Project of Washington County (HPP) received a state Division of Public Health award for promotion of nutrition—the Golden Carrot Award in 2009
  - ◆ The Health Department continued work on becoming designated as a breastfeeding friendly agency and a new community coalition was formed to promote breastfeeding
  - ◆ HPP identified other stakeholders and began development of a countywide website and map to promote and show case opportunities for physical activity

## Health Promotion

Strategic Plan Long Term Goal:

***The public's health is protected and promoted through health promotion information and activities that affect the health and well-being of all***

- ◆ The Women, Infants and Children (WIC) program remains a critical support for families, encompassing supplemental food vouchers, nutrition information, education and promotion of breastfeeding which is associated with reduced childhood obesity
- ◆ In 2009 a total of 2,677 women and children were served by WIC, up 4% from 2008

	JAN	FEB	MAR	APR	MAY	JUN	JUL	AUG	SEP	OCT	NOV	DEC	2009	2008
Individual WIC Caseload	1533	1520	1542	1564	1546	1588	1574	1585	1552	1561	1562	1530	1555**	1471**
Family WIC Caseload	928	931	943	960	936	975	965	977	955	972	980	938	955**	897**

\*\* Monthly average

# Environmental Health (Human Health Hazard Control)

Wisconsin Statutes 251.05(2) & 252  
Administrative Rule HFS 140.04(1)(e) & (f)

Strategic Plan Long Term Goal:

***The public is to be protected from unhealthy environmental conditions where they live, work and play***

Highlights:

- ◆ A proposal for expanded environmental health services to develop a local food safety and recreational licensing program for facilities serving the public was made by the Board of Health and passed by the County Board in June 2009 to officially begin July 1, 2010
- ◆ Data systems for the expanded environmental health services were explored including training on a new recommended state system
- ◆ Assisted 8 municipalities in follow-up and investigation of 14 reported possible human health hazards
- ◆ Continued the contract with the WDNR for inspection and water testing at 215 transient non-community (TNC) well water systems
- ◆ Continued the limited agent contract with Division of Public Health for inspection and follow-up of 69 facilities including 39 prepackaged food restaurants, 26 lodgings and 4 campgrounds
- ◆ Continued to send letters recommending blood lead testing to parents of Title 19 eligible 1-yr olds with no record of the test, 2-yr olds with no record of a test since 18 months of age and to 36-71 month olds with no record of ever being tested for lead poisoning
- ◆ In February 2009 a radon presentation for home builders, Realtors, radon mitigation contractors and the general public was held with 38 persons in attendance
- ◆ As a result of distributing over 800 radon test kits in Washington County, 376 residents tested for radon
- ◆ Assisted citizens and municipalities with concerns about indoor air quality, beach safety, well water testing, pest control, animal bites, lead poisonings, food safety, housing and environmental health concerns as well as make referrals to the Department of Agriculture Trade & Consumer Protection for landlord/tenant issues.
- ◆ Environmental Health staff participated fully in the H1N1 response making it necessary to prioritize services
- ◆ Beach Testing occurred weekly from Memorial Day through Labor Day at 3 beaches with one closure
- ◆ For the second year a collaborative regional medication collection day was held with Ozaukee, Milwaukee, Washington and Racine Counties to prevent medications from contaminating ground water
- ◆ Health Department staff participated in the planning and implementation of both medication collection events with other area partners: Sheriff's Dept., Planning and Parks, area hospitals, City of West Bend Sewer Utility and Veolia Environmental Services
- ◆ Assisted with the investigation and follow-up of suspected food borne illnesses in the community and collaborated with DPH

Medication Collections	2008	2009
# non controlled meds	723	1539
# controlled meds	83	104
# participants	370	677

## Health Promotion (continued)

Highlights:

- ◆ New lower-fat food choices were introduced for clients with more whole grains foods, fruits and vegetables
- ◆ The WIC Supervisor completed International Board Certification as a Lactation Consultant
- ◆ Participants redeemed \$6,393 in vouchers to purchase fresh fruits and vegetables from local producers at farmers' markets in 2009
- ◆ In 2009 72.5% of babies were breastfed, the same as in 2008, and of those:
  - 73.8% were breastfed for 1 month or more, up from 71% in 2008 and 62% in 2007
  - 65.9% were breastfed for at least 3 months
  - 34% were breastfed for 6 months or more
- ◆ Identification of a trend of postpartum clients not returning to ideal weight before subsequent pregnancies led to development of a weight management support group coordinated between WIC and PH Nurses

Strategic Plan Long Term Goal:

**Public health needs will be balanced with community resources/capacity through community assessment and prioritization to identify at-risk or vulnerable populations and match needs to resources**

Highlights:

- ◆ Pregnant women, new mothers and their babies continue to be identified as an at-risk group needing the assistance and support that the Health Department provides and referral to other community resources, including, but not limited to, Birth to Three, food pantry, Badger Care and day care services
- ◆ Public Health Nurses provide education on topics including, but not limited to, safe sleep, car seat safety, smoking cessation, nutrition, physical activity, infant care and childhood growth and development
- ◆ A public health nurse working with pregnant clients was certified as a lactation specialist in addition to the lactation services provided by the WIC program
- ◆ Surveillance of birth certificates received electronically from the state continued with at least 2 general mailings sent to all new parents about Health Department services, including H1N1 vaccination at 6 months, and other recommended vaccinations
- ◆ Annual births were 1512, 1504 and 1534 in years 2007, 2008 and 2009 respectively

	JAN	FEB	MAR	APR	MAY	JUN	JUL	AUG	SEP	OCT	NOV	DEC	2009	2008
Prenatal Assessments	16	8	9	12	9	14	10	10	3	2	3	3	99	141
Postpartum Assessments	20	11	6	18	8	12	13	6	8	11	14	17	144	149
Presumptive Eligibility Determinations	9	7	5	5	6	9	5	4	2	0	1	1	54	96
# women per month receiving a pregnancy - related service	90	80	91	85	73	93	90	76	60	60	65	71	354*	512*
# women per month receiving services under Title 19	32	29	25	24	22	33	26	29	25	19	23	21	109*	145*

\* Duplicates in the 12 month total were eliminated , counting each client only once

**Community Health Improvement Plan (CHIP)** Activities that supported the 3 priority areas of the plan included, but are not limited to the following:

- ◆ The *Healthy People Project of Washington County* developed a strategic plan and has begun work on planning a community forum in 2010 concerning how our environment affects activity levels (**obesity**)
- ◆ The Washington County Tobacco Free Coalition supported statewide smoke free legislation for public places and the multi jurisdictional community coalition reorganization (**addictions**)
- ◆ The *All Hazards Preparedness Coalition (AHPC)* is developing a fund to accept donations for any jurisdictional disaster or emergency and was supportive of the H1N1 campaign (**emergency preparedness**)

The Wisconsin Department of Health Services Division of Public Health reviewed the Washington County Health Department in 1999, 2005 and again in 2009. The Washington County Health Department has continued to meet the Level II requirements of Administrative Rule HFS 140.07(4) during each five year review period. To qualify for Level II the Health Department has met the minimum standards outlined in Wisconsin Statutes for all Level I health departments and, in addition, demonstrated that programming and services were in place addressing at least 7 areas of the current state health plan and had a qualified Health Officer. To meet Level III standards a health department must be an agent of the state providing a local licensed facility inspection program, meet higher standards and offer more programming than Level I and II departments. The Health Department's proposal to implement food safety and recreational licensing services as an agent of the state was approved in June 2009 to be implemented in July 2010.